



9MX056 TL-D / TL5 swivel device

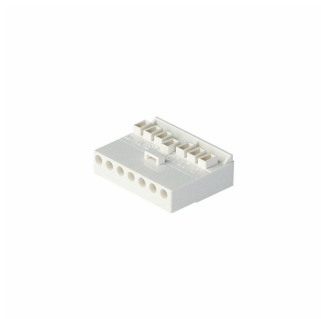
Maxos accessories

The swivel device is a versatile mechanical connecting device for Maxos TL-D and TL5 light-lines and enables variable angles between the light-lines. The minimum angle is 45 degrees. Due to its attractive design it is often used in application areas such as shops, schools and museums. Up to four light-lines can be connected with one swivel device. The housing is made of plastic, with a white or silver coating, and with inner supporting elements made of steel. If needed, the swivel device can accommodate lighting control sensors, loudspeakers, etc. It is pre-mounted with an adjustable quick hanger with a 1.25 m steel suspension wire. One dedicated coupling piece (9MX056 CP-SD WH/SI) per trunking section is necessary to connect the trunking to the swivel device. Electrical components for mains feed-through have to be ordered as required.

Benefits

• -

Versions



Electrical connector 7-pole

Maxos accessories

Product details



Maxos 4MX056 TL-D extended trunking section M300/E300/M600/E600 and blind cover, used to close the spaces in the trunking where no electrical units are mounted

Approval and application

Ingress protection code	-
Ingress protection code	-

Operating and electrical

Circuit	No
---------	----

General information

Product Family Code	9MX056
Product Family Code	9MX056

Light technical

Optical cover/lens acc. type	No
Optical cover/lens acc. type	No

Mechanical and housing

Length	- mm
--------	------

Operating and electrical

Order Code	Full Product Name	Electrical accessories	Input Frequency	Input Voltage	Input Voltage
13179200	9MX056 EC7	EC7	50 to 60 Hz	220 to 240 V	220 to 240 V
03217400	9MX056 EC7 (10PCS)	EC7	50 to 60 Hz	220 to 240 V	220 to 240 V
10807700	9MX056 CP WH	No	-	-	-
10808400	9MX056 CP SI	No	-	-	-
10809100	9MX056 CPI	No	-	-	-
60157899	9MX056 BC49 WH	No	-	-	-
60158599	9MX056 BC49 SI	No	-	-	-
10824400	9MX056 EP WH SET	No	-	-	-
10825100	9MX056 EP SI SET	No	-	-	-
53881299	9MX056 BC58 WH	No	-	-	-
53888199	9MX056 BC58 SI	No	-	-	-

General information (1/2)

Order Code	Full Product Name	Accessory color	Protection class IEC	Mechanical accessories	Mechanical accessories
13179200	9MX056 EC7	-	Safety class I (I)	No	No
03217400	9MX056 EC7 (10PCS)	-	Safety class I (I)	No	No
10807700	9MX056 CP WH	White	-	No	No
10808400	9MX056 CP SI	Silver	-	No	No
10809100	9MX056 CPI	-	-	No	No
60157899	9MX056 BC49 WH	White	-	BC49	BC49

Order Code	Full Product Name	Accessory color	Protection class IEC	Mechanical accessories	Mechanical accessories
60158599	9MX056 BC49 SI	Silver	-	BC49	BC49
10824400	9MX056 EP WH SET	White	-	EP	EP
10825100	9MX056 EP SI SET	Silver	-	EP	EP
53881299	9MX056 BC58 WH	White	-	BC58	BC58
53888199	9MX056 BC58 SI	Silver	-	BC58	BC58

General information (2/2)

Order Code	Full Product Name	Packaging configuration	Suspension accessories	Suspension accessories
13179200	9MX056 EC7	No	No	No

Maxos accessories

Order Code	Full Product Name	Packaging configuration	Suspension accessories	Suspension accessories
03217400	9MX056 EC7 (10PCS)	(10PCS)	No	No
10807700	9MX056 CP WH	No	CP	CP
10808400	9MX056 CP SI	No	CP	CP
10809100	9MX056 CPI	No	CPI	CPI
60157899	9MX056 BC49 WH	No	No	No

Order Code	Full Product Name	Packaging configuration	Suspension accessories	Suspension accessories
60158599	9MX056 BC49 SI	No	No	No
10824400	9MX056 EP WH SET	SET	No	No
10825100	9MX056 EP SI SET	SET	No	No
53881299	9MX056 BC58 WH	No	No	No
53888199	9MX056 BC58 SI	No	No	No

