



Spreadhead spiral shape energy saving products, preferred by over 90% of consumers

Tornado T2

Tornado has outstanding brightness which makes your colors appear more Vivid. It fits everywhere due to its compact design. With comprehensive product range, it allows easy replacement of incandescent lamps all the way.

Benefits

- Outstanding brightness & Vivid Colors
- Flicker-Free start & Fast run up
- Save your money with long life-time and high energy efficiency compare to incandescent lamp

Features

- Long-Life and Energy saving alternative to Incandescent lamps
- Fast Run-up
- Recommended ambient temperature range to ensure almost constant light output (>90%): 0 and + 50°C

Tornado T2

Application

- Replacement of incandescent lamps both in professional and home applications (hotels, restaurants, shops) where the lamp is not directly visible; especially suitable for use in indoor functional areas
- Enclosed fixtures required for outdoor applications
- Not suitable for use with dimmers or electronic gear

Warnings and Safety

- Breaking a lamp is extremely unlikely to have any impact on your health. If a lamp breaks, ventilate the room for 30 minutes and remove the parts, preferably with gloves. Put them in a closed plastic bag and take it to your local waste facilities for recycling. Do not use a vacuum cleaner.
- Compact fluorescent lamps have to be treated as special waste, they must be taken to your local waste facilities for recycling. The European Lighting Industry has set up an infrastructure, capable of recycling mercury, other metals, glass etc.

Versions



8W, E26/E27



12W, E26/E27



20W, E27



8W, E14



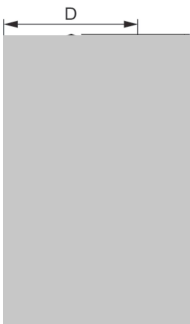
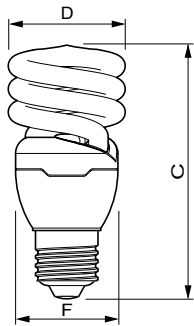
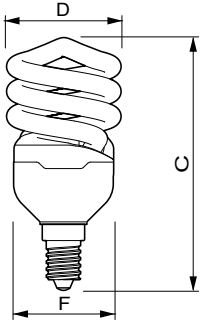
12W, E14



23W, E26, E27

Tornado T2

Dimensional drawing



Product	D (max)	C (max)	F (max)
Tornado T2 12W WW E14 220-240V 1PF/6	47.5 mm	104.0 mm	40.5 mm
Tornado T2 12W CDL E14 220-240V 1PF/6	47.5 mm	104.0 mm	40.5 mm

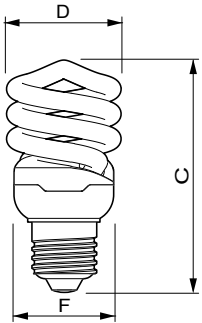
Product	D (max)	C (max)	F (max)
Tornado T2 23W WW E27 220-240V 1PF/6	61.5 mm	118.5 mm	50.5 mm
Tornado T2 23W CDL E27 220-240V 1PF/6	61.5 mm	118.5 mm	50.5 mm

Product	D (max)	C (max)	F (max)
Tornado T2 15W WW E27 220-240V 1PF/6	51.5 mm	107.5 mm	42.5 mm
Tornado T2 15W CDL E27 220-240V 1PF/6	51.5 mm	107.5 mm	42.5 mm

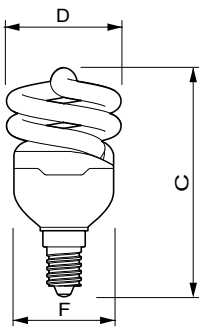
Product	D (max)	C (max)	F (max)
Tornado T2 20W WW E27 220-240V 1PF/6	56.5 mm	116.0 mm	47 mm
Tornado T2 20W CDL E27 220-240V 1PF/6	56.5 mm	116.0 mm	47 mm

Tornado T2

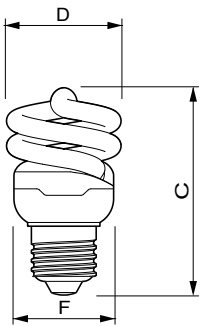
Dimensional drawing



Product	D (max)	C (max)	F (max)
Tornado T2 12W WW E27 220-240V 1PF/6	47.5 mm	94.0 mm	40.5 mm



Product	D (max)	C (max)	F (max)
Tornado T2 8W WW E14 220-240V 1PF/6	47.5 mm	96.5 mm	40.5 mm



Product	D (max)	C (max)	F (max)
Tornado T2 8W WW E27 220-240V 1PF/6	47.5 mm	86.5 mm	40.5 mm

Tornado T2

Approval and Application

Energy Efficiency Label (EEL)	A
-------------------------------	---

Controls and Dimming

Dimmable	No
----------	----

Operating and Electrical

Input Frequency	50 or 60 Hz
Voltage (Nom)	220-240 V
Starting Time (Nom)	0.3 s
Warm Up Time To 60% Light (Max)	40 s
Warm Up Time To 60% Light (Min)	5 s

General Information

Nominal Lifetime (Nom)	10000 h
Rated Lifetime (Hours)	10000 h
Switching Cycle	10000X

Light Technical

Llmf At End Of Nominal Lifetime (Nom)	65 %
Lumen Maintenance 2000 h (Nom)	88 %

Mechanical and Housing

Bulb Shape	Spiral
------------	--------

Approval and Application

Order Code	Full Product Name	Energy Consumption kWh/1000 h	Mercury (Hg) Content (Max)	Mercury (Hg) Content (Nom)
11708700	Tornado T2 8W WW E27 220-240V 1PF/6	8 kWh	2.0 mg	1.5 mg
11698100	Tornado T2 12W WW E27 220-240V 1PF/6	12 kWh	2.0 mg	1.5 mg
92578400	Tornado T2 15W WW E27 220-240V 1PF/6	15 kWh	2.0 mg	1.5 mg
92584500	Tornado T2 15W CDL E27 220-240V 1PF/6	15 kWh	2.0 mg	1.5 mg
40517900	Tornado T2 20W WW E27 220-240V 1PF/6	20 kWh	2.0 mg	1.5 mg
40515500	Tornado T2 20W CDL E27 220-240V 1PF/6	20 kWh	2.0 mg	1.5 mg
11716200	Tornado T2 8W WW E14 220-240V 1PF/6	8 kWh	2.0 mg	1.5 mg
11724700	Tornado T2 12W WW E14 220-240V 1PF/6	12 kWh	2.0 mg	1.5 mg
11720900	Tornado T2 12W CDL E14 220-240V 1PF/6	12 kWh	2.0 mg	1.5 mg
92594400	Tornado T2 23W WW E27 220-240V 1PF/6	23 kWh	2.5 mg	2 mg
92600200	Tornado T2 23W CDL E27 220-240V 1PF/6	23 kWh	2.5 mg	2 mg

Operating and Electrical

Order Code	Full Product Name	Lamp Current (Nom)	Power (Rated) (Nom)
11708700	Tornado T2 8W WW E27 220-240V 1PF/6	60 mA	8.0 W
11698100	Tornado T2 12W WW E27 220-240V 1PF/6	90 mA	12.0 W
92578400	Tornado T2 15W WW E27 220-240V 1PF/6	110 mA	15.0 W
92584500	Tornado T2 15W CDL E27 220-240V 1PF/6	110 mA	15.0 W
40517900	Tornado T2 20W WW E27 220-240V 1PF/6	150 mA	20 W
40515500	Tornado T2 20W CDL E27 220-240V 1PF/6	150 mA	20.0 W

Order Code	Full Product Name	Lamp Current (Nom)	Power (Rated) (Nom)
11716200	Tornado T2 8W WW E14 220-240V 1PF/6	60 mA	8.0 W
11724700	Tornado T2 12W WW E14 220-240V 1PF/6	90 mA	12.0 W
11720900	Tornado T2 12W CDL E14 220-240V 1PF/6	90 mA	12.0 W
92594400	Tornado T2 23W WW E27 220-240V 1PF/6	170 mA	23.0 W
92600200	Tornado T2 23W CDL E27 220-240V 1PF/6	170 mA	23.0 W

General Information

Order Code	Full Product Name	Cap-Base
11708700	Tornado T2 8W WW E27 220-240V 1PF/6	E27
11698100	Tornado T2 12W WW E27 220-240V 1PF/6	E27
92578400	Tornado T2 15W WW E27 220-240V 1PF/6	E27
92584500	Tornado T2 15W CDL E27 220-240V 1PF/6	E27
40517900	Tornado T2 20W WW E27 220-240V 1PF/6	E27
40515500	Tornado T2 20W CDL E27 220-240V 1PF/6	E27

Order Code	Full Product Name	Cap-Base
11716200	Tornado T2 8W WW E14 220-240V 1PF/6	E14
11724700	Tornado T2 12W WW E14 220-240V 1PF/6	E14
11720900	Tornado T2 12W CDL E14 220-240V 1PF/6	E14
92594400	Tornado T2 23W WW E27 220-240V 1PF/6	E27
92600200	Tornado T2 23W CDL E27 220-240V 1PF/6	E27

Tornado T2

Light Technical (1/2)

Order Code	Full Product Name	Chromaticity		Color	
		Coordinate X (Nom)	Coordinate Y (Nom)	Code	Designation
11708700	Tornado T2 8W WW E27 220-240V 1PF/6	463	420	827	Warm White (WW)
11698100	Tornado T2 12W WW E27 220-240V 1PF/6	463	420	827	Warm White (WW)
92578400	Tornado T2 15W WW E27 220-240V 1PF/6	463	420	827	Warm White (WW)
92584500	Tornado T2 15W CDL E27 220-240V 1PF/6	313	337	865	Cool Daylight
40517900	Tornado T2 20W WW E27 220-240V 1PF/6	463	420	827	Warm White (WW)
40515500	Tornado T2 20W CDL E27 220-240V 1PF/6	313	337	865	Cool Daylight

Order Code	Full Product Name	Chromaticity		Color	
		Coordinate X (Nom)	Coordinate Y (Nom)	Code	Designation
11716200	Tornado T2 8W WW E14 220-240V 1PF/6	463	420	827	Warm White (WW)
11724700	Tornado T2 12W WW E14 220-240V 1PF/6	463	420	827	Warm White (WW)
11720900	Tornado T2 12W CDL E14 220-240V 1PF/6	313	337	865	Cool Daylight
92594400	Tornado T2 23W WW E27 220-240V 1PF/6	463	420	827	Warm White (WW)
92600200	Tornado T2 23W CDL E27 220-240V 1PF/6	313	337	865	Cool Daylight

Light Technical (2/2)

Order Code	Full Product Name	Correlated Color Temperature (Nom)	Color Rendering Index (Nom)	Luminous Efficacy (rated) (Nom)	Luminous Flux	
					Luminous Flux (Nom)	Luminous Flux (Rated) (Nom)
11708700	Tornado T2 8W WW E27 220-240V 1PF/6	2700 K	82	62 lm/W	505 lm	505 lm
11698100	Tornado T2 12W WW E27 220-240V 1PF/6	2700 K	82	61 lm/W	741 lm	741 lm
92578400	Tornado T2 15W WW E27 220-240V 1PF/6	2700 K	82	65 lm/W	970 lm	970 lm
92584500	Tornado T2 15W CDL E27 220-240V 1PF/6	6500 K	80	61 lm/W	900 lm	900 lm
40517900	Tornado T2 20W WW E27	2700 K	82	67 lm/W	1320 lm	1320 lm

Order Code	Full Product Name	Correlated Color Temperature (Nom)	Color Rendering Index (Nom)	Luminous Efficacy (rated) (Nom)	Luminous Flux	
					Luminous Flux (Nom)	Luminous Flux (Rated) (Nom)
	220-240V 1PF/6					
40515500	Tornado T2 20W CDL E27 220-240V 1PF/6	6500 K	80	64 lm/W	1305 lm	1305 lm
11716200	Tornado T2 8W WW E14 220-240V 1PF/6	2700 K	82	62 lm/W	505 lm	505 lm
11724700	Tornado T2 12W WW E14 220-240V 1PF/6	2700 K	82	61 lm/W	741 lm	741 lm
11720900	Tornado T2 12W CDL E14 220-240V 1PF/6	6500 K	80	58 lm/W	705 lm	705 lm
92594400	Tornado T2 23W WW	2700 K	82	67 lm/W	1570 lm	1570 lm

Tornado T2

Order Code	Full Product Name	Correlated Color Temperature (Nom)	Color Rendering Index (Nom)	Luminous Efficacy (rated) (Nom)	Luminous Flux (Nom)	Luminous Flux (Rated) (Nom)
92600200	Tornado T2 23W CDL	6500 K	80	63 lm/W	1450 lm	1450 lm

