



Product Description

MHN-TD

Double-ended quartz Metal-halide lamp

Benefits

- All types are UV-Block for reduced health and fading risks

Features

- Quartz discharge tube containing high-pressure mercury and a mixture of dysprosium, holmium and thulium halides (4200K) or tin iodide (3000K), with sodium and thallium added for colour correction and arc stabilisation
- double-ended lamps housed in a tubular clear UV-Block quartz evacuated outer envelope
- Restricted burning position

Application

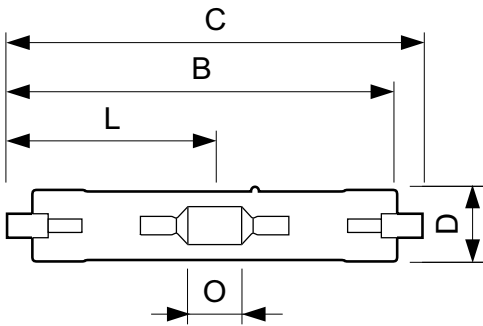
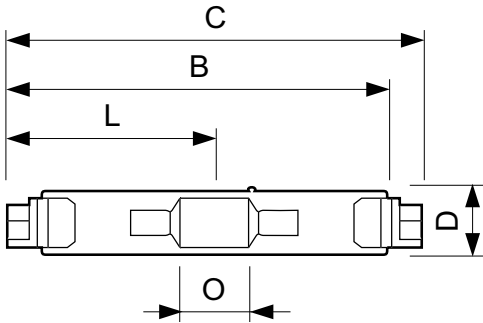
- Indoors - accent lighting, general lighting in downlighters, e.g. in shops and malls
- Downlighters, uplighters and wall-washers, e.g. in shops and malls
- Outdoors - floodlighting monuments, facades and billboards

Warnings and Safety

- Use only in totally enclosed luminaire, even during testing (IEC61167, IEC 62035, IEC60598)
- The luminaire must be able to contain hot lamp parts if the lamp ruptures
- Control gear must include end-of-life protection (IEC61167, IEC 62035)
- A lamp breaking is extremely unlikely to have any impact on your health. If a lamp breaks, ventilate the room for 30 minutes and remove the parts, preferably with gloves. Put them in a sealed plastic bag and take it to your local waste facilities for recycling. Do not use a vacuum cleaner.

MHN-TD

Dimensional drawing



Product	D (max)	D	O	C (max)
MHN-TD 250W/842 FC2 1CT/12	27.5 mm	1.08 in	27 mm	161.6 mm

Product	D (max)	D	O	C (max)
MHN-TD 70W/842 RX7s 1CT/12	19.5 mm	0.75 in	7.7 mm	117.6 mm
MHN-TD 150W/842 RX7s 1CT/12	23.0 mm	0.89 in	17.8 mm	135.4 mm
MHN-TD 70W/730 RX7s 1CT/12	19.5 mm	0.75 in	7.7 mm	117.6 mm
MHN-TD 150W/730 RX7s 1CT/12	23.0 mm	0.89 in	17.8 mm	135.4 mm

Controls and Dimming

Dimmable No

General Information

Life To 5% Failures (Min) 4000 h

Life To 5% Failures (Nom) 5000 h

Operating Position P45

Mechanical and Housing

Bulb Finish Clear

Approval and Application

Order Code	Full Product Name	Energy Consumption kWh/1000 h	Energy Efficiency Label (EEL)	Mercury (Hg) Content (Nom)
21532500	MHN-TD 70W/842 RX7s 1CT/12	85 kWh	A	11 mg
21536300	MHN-TD 150W/842 RX7s 1CT/12	171 kWh	A	12.3 mg
21530100	MHN-TD 70W/730 RX7s 1CT/12	85 kWh	A	13.4 mg

Order Code	Full Product Name	Energy Consumption kWh/1000 h	Energy Efficiency Label (EEL)	Mercury (Hg) Content (Nom)
21534900	MHN-TD 150W/730 RX7s 1CT/12	171 kWh	A+	18 mg
73400615	MHN-TD 250W/842 FC2 1CT/12	277 kWh	A	16 mg

Operating and Electrical

MHN-TD

Order Code	Full Product Name	Lamp Current (EM) (Nom)	Voltage (Max)	Voltage (Min)	Voltage (Nom)	Power (Rated) (Nom)
21532500	MHN-TD 70W/842 RX7s 1CT/12	1.0 A	100 V	80 V	90 V	77 W
21536300	MHN-TD 150W/842 RX7s 1CT/12	1.8 A	108 V	88 V	98 V	155 W
21530100	MHN-TD 70W/730 RX7s 1CT/12	0.98 A	98 V	78 V	90 V	77 W
21534900	MHN-TD 150W/730 RX7s 1CT/12	1.8 A	106 V	86 V	96 V	155 W
73400615	MHN-TD 250W/842 FC2 1CT/12	3 A	110 V	85 V	95 V	250.0 W

General Information

Order Code	Full Product Name	Cap-Base	Life To 20% Failures (Min)	Life To 20% Failures (Nom)	Life To 50% Failures (Min)	Life To 50% Failures (Nom)
21532500	MHN-TD 70W/842 RX7s 1CT/12	RX7S	6500 h	8000 h	8500 h	10500 h
21536300	MHN-TD 150W/842 RX7s 1CT/12	RX7S	6500 h	8000 h	8500 h	10500 h
21530100	MHN-TD 70W/730 RX7s 1CT/12	RX7S	5800 h	7000 h	7500 h	9000 h
21534900	MHN-TD 150W/730 RX7s 1CT/12	RX7S	6500 h	8000 h	8500 h	10500 h
73400615	MHN-TD 250W/842 FC2 1CT/12	FC2	5800 h	7000 h	7500 h	9000 h

Luminaire Design Requirements

Order Code	Full Product Name	Bulb Temperature (Max)	Order Code	Full Product Name	Bulb Temperature (Max)
21532500	MHN-TD 70W/842 RX7s 1CT/12	500 °C	21534900	MHN-TD 150W/730 RX7s 1CT/12	650 °C
21536300	MHN-TD 150W/842 RX7s 1CT/12	650 °C	73400615	MHN-TD 250W/842 FC2 1CT/12	650 °C
21530100	MHN-TD 70W/730 RX7s 1CT/12	500 °C			

Light Technical (1/2)

Order Code	Full Product Name	Chromaticity	Chromaticity	Color		Correlated Color	Color	Lumen Maintenance
		Coordinate X	Coordinate Y	Code	Color Designation	Temperature (Nom)	Rendering Index (Nom)	
21532500	MHN-TD 70W/842 RX7s 1CT/12	370	370	842	Cool White (CW)	4200 K	80	40 %
21536300	MHN-TD 150W/842 RX7s 1CT/12	370	370	842	Cool White (CW)	4200 K	85	60 %
21530100	MHN-TD 70W/730 RX7s 1CT/12	434	400	730	Warm White (WW)	3000 K	70	45 %
21534900	MHN-TD 150W/730 RX7s 1CT/12	434	400	730	Warm White (WW)	3000 K	70	50 %
73400615	MHN-TD 250W/842 FC2 1CT/12	370	365	842	Cool White (CW)	4200 K	85	50 %

Light Technical (2/2)

Order Code	Full Product Name	Lumen Maintenance 10000 h (Nom)	Lumen Maintenance 2000 h (Min)	Lumen Maintenance 2000 h (Nom)	Lumen Maintenance 5000 h (Min)	Lumen Maintenance 5000 h (Nom)	Luminous Efficacy (rated) (Min)	Luminous Efficacy (rated) (Nom)	Luminous Flux (Rated) (Min)	Luminous Flux (Rated) (Nom)
21532500	MHN-TD 70W/842 RX7s 1CT/12	75 %	79 %	85 %	68 %	80 %	67 lm/W	75 lm/W	5220 lm	5800 lm
21536300	MHN-TD 150W/842 RX7s 1CT/12	70 %	74 %	80 %	68 %	75 %	73 lm/W	81 lm/W	11250 lm	12500 lm
21530100	MHN-TD 70W/730 RX7s 1CT/12	55 %	59 %	65 %	53 %	60 %	67 lm/W	75 lm/W	5220 lm	5800 lm
21534900	MHN-TD 150W/730 RX7s 1CT/12	60 %	69 %	75 %	58 %	65 %	81 lm/W	90 lm/W	12510 lm	13900 lm

MHN-TD

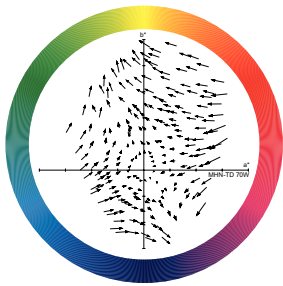
Order Code	Full Product Name	Lumen Maintenance 10000 h (Nom)	Lumen Maintenance 2000 h (Min)	Lumen Maintenance 2000 h (Nom)	Lumen Maintenance 5000 h (Min)	Lumen Maintenance 5000 h (Nom)	Luminous Efficacy (rated) (Min)	Luminous Efficacy (rated) (Nom)	Luminous Flux (Rated) (Min)	Luminous Flux (Rated) (Nom)
73400615	MHN-TD 250W/842 FC2 1CT/12	60 %	69 %	75 %	63 %	70 %	-	80 lm/W	18000 lm	20000 lm

Mechanical and Housing

Order Code	Full Product Name	Bulb Shape
21532500	MHN-TD 70W/842 RX7s 1CT/12	TD
21536300	MHN-TD 150W/842 RX7s 1CT/12	TD
21530100	MHN-TD 70W/730 RX7s 1CT/12	TD

Order Code	Full Product Name	Bulb Shape
21534900	MHN-TD 150W/730 RX7s 1CT/12	TD
73400615	MHN-TD 250W/842 FC2 1CT/12	T27

Colour Rendering Diagrams



LDCR_MHN-TD_70W-Colour rendering diagram

