



Product Description

HF-Matchbox Blue

Compact, lightweight, High Frequency electronic ballast for TL (4-18W), TL5 (14-28W) and compact fluorescent PL (5-24W) lamps

Benefits

- Automatic restart (after voltage dip or lamp exchange) ensures easy operation and hassle-free re-lamping.
- Suitable for use in class I or class II luminaires

Features

- Suitable for emergency DC operation between 190 and 254 V
- Programmed, flicker-free, pre-heated start (<0.8 s); over 8,000 on/off switches on one lamp (depending on lamp/ballast combination)
- Automatic restart (after voltage dip or lamp exchange) ensures easy operation and hassle-free re-lamping.

Application

- Designed for areas where the lighting is switched on and off infrequently
- Not suitable for use in combination with movement / presence detection
- Indoor residential use including living rooms, kitchens (under cupboards), studies (desktop), bedrooms, halls, staircases and garages
- Outdoor residential use including driveways, porches, front doors and galleries
- Installations with emergency back-up according to VDE 0108-100 / EN 60598-2-22
- For luminaires with protection Class I and II; Class I metal luminaires with earth connection require special measures for EMC compliance

HF-Matchbox Blue

Versions



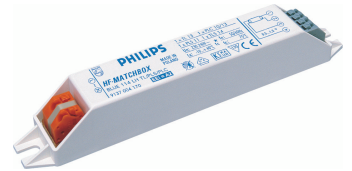
HF-M BLUE 124 SH TL/TL5/PLL 230-240V



HF-M BLUE 124 LH TL/TL5/PLL 230-240V

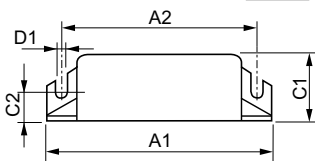
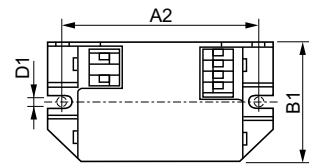
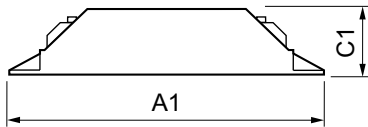
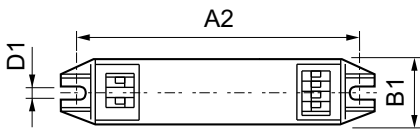


HF-M BLUE 121 LH TL5 230-240V



HF-M BLUE 128 LH TL5 230-240V

Dimensional drawing



Product

HF-M BLUE 114 LH TL/PL-S/PL-C 230-240V

HF-M BLUE 109 LH TL/PL-S 230-240V

HF-M BLUE 121 LH TL5 230-240V

HF-M BLUE 124 LH TL/TL5/PL-L 230-240V

Product

HF-M BLUE 124 SH TL/TL5/PL-L 230-240V

Operating and electrical

Input Frequency	50 to 60 Hz
Input Voltage	230 to 240 V

General information

Number Of Lamps	1 piece/unit
-----------------	--------------

General information

HF-Matchbox Blue

Order Code	Full Product Name	Number Of Products On MCB (16A Type B) (Nom)	Lamp Type
53638930	HF-M BLUE 124 SH TL/TL5/PL-L 230-240V	60	TL/TL5/PL-L
53640230	HF-M BLUE 124 LH TL/TL5/PL-L 230-240V	60	TL/TL5/PL-L

Order Code	Full Product Name	Number Of Products On MCB (16A Type B) (Nom)	Lamp Type
53646430	HF-M BLUE 121 LH TL5 230-240V	59	TL5
53680830	HF-M BLUE 109 LH TL/PL-S 230-240V	159	TL/PL-S
53682230	HF-M BLUE 114 LH TL/PL-S/PL-C 230-240V	101	TL/PL-S/PL-C

Mechanical and housing

Order Code	Full Product Name	Housing
53638930	HF-M BLUE 124 SH TL/TL5/PL-L 230-240V	SH
53640230	HF-M BLUE 124 LH TL/TL5/PL-L 230-240V	LH
53646430	HF-M BLUE 121 LH TL5 230-240V	LH

Order Code	Full Product Name	Housing
53680830	HF-M BLUE 109 LH TL/PL-S 230-240V	LH
53682230	HF-M BLUE 114 LH TL/PL-S/PL-C 230-240V	LH

System characteristics

Order Code	Full Product Name	Lamp	Lamp	Lamp	Rated
		Power On	Power On	Power On	Ballast-Lamp
		PL-C	PL-S	TL	Power
53638930	HF-M BLUE 124 SH TL/TL5/PL-L 230-240V	-	-	-	24 W
53640230	HF-M BLUE 124 LH TL/TL5/PL-L 230-240V	-	-	-	24 W
53646430	HF-M BLUE 121 LH TL5 230-240V	-	-	-	21 W

Order Code	Full Product Name	Lamp	Lamp	Lamp	Rated
		Power On	Power On	Power On	Ballast-Lamp
		PL-C	PL-S	TL	Power
53680830	HF-M BLUE 109 LH TL/PL-S 230-240V	-	7.8 W	8.2 W	9 W
53682230	HF-M BLUE 114 LH TL/PL-S/PL-C 230-240V	12.2 W	11.9 W	11.8 W	14 W

