



Extending the home feel onto the street

TownTune Asymmetric

As a luminaire family prepared for existing and scalable urban spaces, TownTune offers all the recent lighting innovations in terms of performance, quality of light and connectivity. The Philips TownTune family consists of three members: a central post top, an asymmetric spigot version and a version using an extending lyre post top bracket. Each of these three can be customized with a choice of different shapes for housing and an optional of decorative ring which comes in two colors. By having these options available you can create your very own lighting signature and give distinctive identity to districts and cities. The luminaire family is also equipped with the QR code-based Philips Service tag, which supports installation and maintenance work and enables you to create your digital library of lighting assets and spare parts. TownTune also makes use of the Philips Ledgine optimized lighting platform ensuring that you always have the right amount and direction of light on your street. Furthermore, thanks to being SR (System Ready), TownTune is also future-proof and is ready to be paired with both standalone and advanced control and lighting software applications such as Interact City.

TownTune Asymmetric

Benefits

- Delivers visual comfort, and comfortable lighting experiences in urban spaces through its dedicatedly designed bowl
- Simple, pure design making it possible to integrate it into various urban environments and the option for customization through a wide range of accessories, lets cities create a unique light signature, which can also become part of the urban furniture in daytime
- Wide application coverage and offers great performance by using the latest Ledgine LED platform and providing access to a wide range of light distributions
- Ready to be paired with lighting control and software applications, by being equipped with the Philips SR (System Ready) socket
- Equipped with Service tag, a QR-based identification system that makes each luminaire uniquely identifiable and provides maintenance, installation and spare part information

Features

- Optimized Total Cost of Ownership and option of CLO (Constant Light Output)
- Excellent quality of light enabled by the Philips Ledgine optimized platform, and further optimization in L-Tune is also possible
- Choice of different shapes for housing (cone, dome), option of decorative ring and color (clear and golden)
- Ready to be paired with standalone lighting controls such as LumiStep, DynaDimmer, and LineSwitch and advanced system and software application such as Interact City
- Wide choice of lumen packages, ranging from 600 to 12,000 lumens
- Choice of color temperature: 3000 K (warm white) or 4000 K (neutral white)
- Long lifetime of 100,000 hours at minimum L80
- Suitable for new and retrofit installations
- IK09, IP66

Application

- Urban and residential areas
- City centers and main streets
- Cycle paths, footpaths and pedestrian crossings
- Car parks

Versions



BDP265, TownTune asymmetric

TownTune Asymmetric

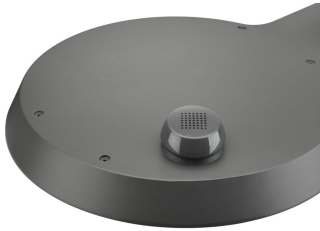
Product details



TownTune ASY BDP265



TownTune ASY BDP265



TownTune ASY BDP265



TownTune ASY BDP265



TownTune ASY DR BDP266



TownTune ASY BDP265

TownTune Asymmetric

-	
Driver failure rate at 5000 h	0.5 %
Application Conditions	
Maximum dim level	10%
Approval and Application	
Mech. impact protection code	IK09
Surge Protection (Common/Differential)	Philips standard surge protection level kV
General Information	
CE mark	CE mark
Optical cover/lens type	PC-UV
Driver included	Yes
Flammability mark	F
Light source replaceable	Yes
Number of gear units	1 unit
Product Family Code	BDP265
Service tag	Yes
Light Technical	
Standard tilt angle side entry	0°
Standard tilt angle posttop	-
Upward light output ratio	0
Mechanical and Housing	
Color	Dark gray

Controls and Dimming

Order Code	Full Product Name	Dimmable
49757600	BDP265 LED40-4S/830 DM50 DDF3 48-4S/60A	Yes
49761300	BDP265 LED120-4S/740 DN10 CLO SRT SRB 76	Yes
88657800	BDP265 LED50-4S/830 II DM10 48/60A	No

General Information

Order Code	Full Product Name	Luminaire light beam spread	Light source	Lamp family	Optic type
			color	code	
49757600	BDP265	6° - 79° × 154°	830 warm	LED40	Distribution
	LED40-4S/830		white		medium 50
	DM50 DDF3 48-4S/60A				
49761300	BDP265	12° - 59° × 158°	740	LED120	Distribution
	LED120-4S/740		neutral		narrow 10
	DN10 CLO SRT SRB 76		white		

Order Code	Full Product Name	Luminaire light beam spread	Light source	Lamp family	Optic type
			color	code	
88657800	BDP265	77° - 11° × 156°	830 warm	LED50	Distribution
	LED50-4S/830 II		white		medium 10
	DM10 48/60A				

Initial Performance (IEC Compliant)

Order Code	Full Product Name	Init. Corr. Color Temperature	Init. Color Rendering	Initial
			Index	luminous flux
49757600	BDP265 LED40-4S/830	3000 K	>80	3200 lm
	DM50 DDF3 48-4S/60A			
49761300	BDP265 LED120-4S/740 DN10 CLO SRT SRB 76	4000 K	>70	9200 lm

Order Code	Full Product Name	Init. Corr. Color Temperature	Init. Color Rendering	Initial
			Index	luminous flux
88657800	BDP265 LED50-4S/830	3000 K	>80	4100 lm
	II DM10 48/60A			

TownTune Asymmetric

