

Solar Panels for Philips Solar Lighting.

Solar Panel Sub System

A Range of Solar panels from 20 W to 325 W specially designed for Philips Solar Street lighting, Flood lighting and Solar Indoor Systems

Benefits

- Robust quality managed by Philips quality discipline, supplied by world class manufacturers
- Customization available
- Plug and play design for easy connection and installation
- TUV certification

Features

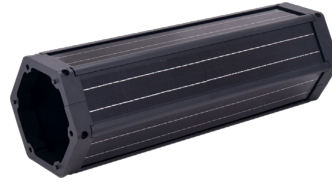
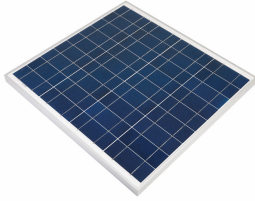
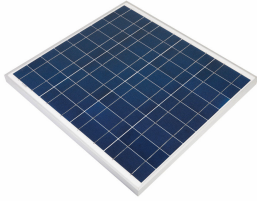
- Connectors with excellent aging resistance and UV endurance, for harsh environment operations.
- Environmentally sealed to IP67
- Ambient temperature range : -40~+85。 C
- Simple crimp-and-poke application
- Tactile and audible mating feedback

Application

- Solar Street Lighting
- Solar Flood Lighting
- Solar Indoor Systems

Solar Panel Sub System

Versions



Solar Panel

90W 18V Panel subsystem

Cylindrical Vertical Solar Panel

Application Conditions

Ambient temperature range -40 to +85 °C

Operating and Electrical

Cable connection kit Included

Approval and Application

Order Code	Full Product Name	Ingress protection code
01803902	155W 17V Panel subsystem Vmpp 18.93V	IP67
01804002	130W 19V Panel subsystem Vmpp 20.16V	IP67
01804502	310W 36V Panel subsystem Vmpp 37.13V	IP67
01815602	325W 36V Panel subsystem	IP67
01893501	200W 36V Panel subsystem Vmpp 38.99V	IP67
50751700	100Wp Vertical Panel Subsystem Vmpp 18V	IP55

Order Code	Full Product Name	Ingress protection code
50750000	100Wp Vertical Panel Subsystem Vmpp 36V	IP55
50749400	140Wp Vertical Panel Subsystem Vmpp 18V	IP55
50748700	140Wp Vertical Panel Subsystem Vmpp 36V	IP55
50747000	190Wp Vertical Panel Subsystem Vmpp 18V	IP55
50746300	190Wp Vertical Panel Subsystem Vmpp 36V	IP55

Operating and Electrical

Order Code	Full Product Name	Panel peak wattage	Panel type	Panel voltage
01803902	155W 17V Panel subsystem Vmpp 18.93V	155 W	Poly crystalline	17 V
01804002	130W 19V Panel subsystem Vmpp 20.16V	130 W	Poly crystalline	19 V
01804502	310W 36V Panel subsystem Vmpp 37.13V	310 W	Poly crystalline	36 V
01815602	325W 36V Panel subsystem	325 W	Poly crystalline	36 V
01893501	200W 36V Panel subsystem Vmpp 38.99V	200 W	Poly crystalline	36 V
50751700	100Wp Vertical Panel Subsystem Vmpp 18V	100 W	Mono crystalline	18 V

Order Code	Full Product Name	Panel peak wattage	Panel type	Panel voltage
50750000	100Wp Vertical Panel Subsystem Vmpp 36V	100 W	Mono crystalline	36 V
50749400	140Wp Vertical Panel Subsystem Vmpp 18V	140 W	Mono crystalline	18 V
50748700	140Wp Vertical Panel Subsystem Vmpp 36V	140 W	Mono crystalline	36 V
50747000	190Wp Vertical Panel Subsystem Vmpp 18V	190 W	Mono crystalline	18 V
50746300	190Wp Vertical Panel Subsystem Vmpp 36V	190 W	Mono crystalline	36 V

Mechanical and Housing

Solar Panel Sub System

Order Code	Full Product Name	Overall height	Overall length	Overall width
01803902	155W 17V Panel subsystem Vmpp 18.93V	35 mm	1476 mm	666 mm
01804002	130W 19V Panel subsystem Vmpp 20.16V	35 mm	1244 mm	666 mm
01804502	310W 36V Panel subsystem Vmpp 37.13V	40 mm	1956 mm	992 mm
01815602	325W 36V Panel subsystem	35 mm	1992 mm	992 mm
01893501	200W 36V Panel subsystem Vmpp 38.99V	40 mm	1318 mm	992 mm
50751700	100Wp Vertical Panel Subsystem Vmpp 18V	1160 mm	228 mm	220 mm

Order Code	Full Product Name	Overall height	Overall length	Overall width
50750000	100Wp Vertical Panel Subsystem Vmpp 36V	1160 mm	228 mm	220 mm
50749400	140Wp Vertical Panel Subsystem Vmpp 18V	1560 mm	228 mm	220 mm
50748700	140Wp Vertical Panel Subsystem Vmpp 36V	1560 mm	228 mm	220 mm
50747000	190Wp Vertical Panel Subsystem Vmpp 18V	2000 mm	228 mm	220 mm
50746300	190Wp Vertical Panel Subsystem Vmpp 36V	2000 mm	228 mm	220 mm

