

# PrimaVision Mini for CDM

## HID-PV m 20 /S CDM 220-240V 50/60Hz

Miniature HID electronic gear for PGJ5 CDM lamps – freeing up the boundaries of creativity and innovation in luminaire design

### Product data

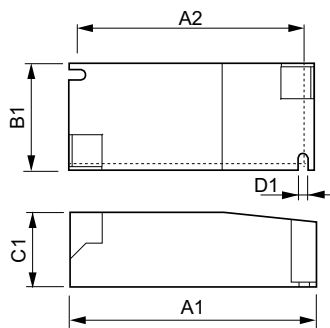
General Information		Constant Wattage Deviation	
Application Code	HPF	Constant Wattage Deviation	-3%/+3%
Type Version	mk2	Power Losses (Nom)	3.5 W
Lamp Type	CDM	Inrush Current Peak (Max)	15 A
Number of Lamps	1 piece/unit	<b>Wiring</b>	
Suitable For Outdoor Use	No	Cable Capacity Output Wires Mutual (Nom)	50 pF
Number of Products on MCB (16A Type B) (Nom)	32	Cable Length From Device to Lamp	0.5 m
Automatic Restart	Yes	Wire Striplength	8.5-9.5 mm
<b>Operating and Electrical</b>		Ballast Contact Wire Cross Section	0.75-1.50 mm <sup>2</sup>
Input Voltage	220 to 240 V	Connector Type	Insert
Input Frequency	50 to 60 Hz	<b>System characteristics</b>	
Minimum Mains Voltage Operation (Min)	198 V	Rated Ballast-Lamp Power	20 W
Power Factor 100% Load (Nom)	0.95	<b>Temperature</b>	
Ignition Voltage (Max)	4.5 kV	T-Ambient (Max)	55 °C
Ignition Voltage (Min)	3.3 kV	T-Ambient (Min)	-20 °C
Ignition Switch-Off Time (Nom)	21 min	T-Storage (Max)	80 °C
Mains Voltage Performance (AC)	198-254V	T-Storage (Min)	-25 °C
Mains Voltage Safety (AC)	180-264V	T-Case Lifetime (Nom)	80 °C
Earth Leakage Current (Max)	0.5 mA	T-Case Maximum (Max)	80 °C
Inrush Current Width	0.25 ms		

## PrimaVision Mini for CDM

Mechanical and Housing	
Housing	/S
Approval and Application	
Active Temperature Protection	Yes
EMI 9 kHz ... 300 MHz	CISPR 15 ed 7.2 / 2009
Vibration Standard	IEC68-2-6 F c
Bumps Standard	IEC 68-2-29 Eb
Approval Marks	CE marking ENEC certificate VDE certificate
Hum And Noise Level	< 25 dB(A)

Product Data	
Full product code	871829167159600
Order product name	HID-PV m 20 /S CDM 220-240V 50/60Hz
EAN/UPC - Product	8718291671596
Order code	67159600
Numerator - Quantity Per Pack	1
Numerator - Packs per outer box	12
Material Nr. (12NC)	913700696066
Net Weight (Piece)	0.115 kg

### Dimensional drawing



HID-PV m 20 /S CDM HPF 220-240V 50/60Hz

Product	D1	C1	A1	A2	B1
HID-PV m 20 /S CDM 220-240V 50/60Hz	4.2 mm	30.2 mm	97.3 mm	88.3 mm	43.3 mm

