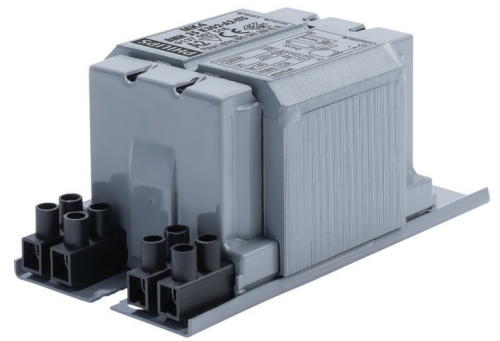


# PHILIPS

## Lighting



# HID-Basic BSN/BMH semi-parallel for SON/CDO/CDM/MH/ HPI

## BMH 35 K302-A2-ITS 230V 50Hz

Impregnated electromagnetic copper/iron ballasts for use with an external semi parallel ignitor for CDM, CDO, MH, HPI (Plus) and SON lamps

### Product data

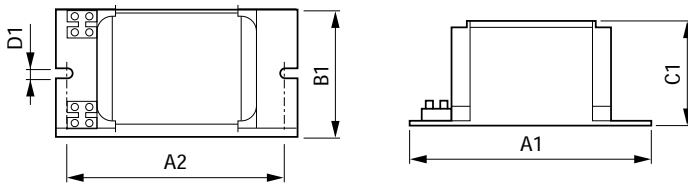
General Information		Power Losses (Nom)	
Application Code	K302-A2-ITS		6 W
Design	BC1-118	Wiring	
Lamp Type	MH	Wire Striplength	6.0 mm
Number of Lamps	1 piece/unit	Ballast Contact Wire Cross Section	2.5 mm <sup>2</sup>
		Connector Type	Screw
Operating and Electrical		System characteristics	
Input Voltage	230 V	Capacitor	6µF/250V
Input Frequency	50 Hz	Rated Ballast-Lamp Power	35 W
Power Factor 100% Load (Nom)	0.85	Recommended Ignitor	for SON/CDO/CDM lamps ignitor SKD 578 (913700655366) or series digital SUD40 (913700193591) only CDM
Mains Voltage Performance (AC)	-8%~+6%	Temperature	
Mains Voltage Safety (AC)	-10%~+10%	T-Storage (Max)	130 °C
Input Current with PF Correction	0.36 A	T-Storage (Min)	-30 °C
Input Current without PF Correction	0.53 A		
Power Factor without PF Compensation (Nom)	0.35		

## HID-Basic BSN/BMH semi-parallel for SON/CDO/CDM/MH/HPI

T-Winding (Max)	140 °C
Delta-T Normal Conditions	35 °C
<b>Approval and Application</b>	
Active Temperature Protection	Yes
Approval Marks	CE marking ENEC certificate
<b>Product Data</b>	
Full product code	871869674068200

Order product name	BMH 35 K302-A2-ITS 230V 50Hz
EAN/UPC - Product	8718696740682
Order code	74068200
Numerator - Quantity Per Pack	1
Numerator - Packs per outer box	6
Material Nr. (12NC)	913700751626
Net Weight (Piece)	1.140 kg

### Dimensional drawing



Product	A1	A2	B1	C1	D1
BMH 35 K302-A2-ITS 230V 50Hz	118 mm	94 mm	61 mm	52 mm	6.2 mm

BMH 35 K302-A2-ITS 230V 50Hz

