



MASTER LEDtube InstantFit HF

MASTER LEDtube HF 1200mm UO 16W840 T8

The Philips MASTER LEDtube integrates a LED light source into a traditional fluorescent form factor. Its unique design creates a perfectly uniform visual appearance which cannot be distinguished from traditional fluorescent. The MASTER LEDtube Performance is the ideal solution for customers which have higher light requirements and the want to maximize value over lifetime.(need the longest lifetime). Full energy savings and TCO benefits.

Warnings and Safety

- NOTES: The overall energy efficiency and light distribution of any installation that uses these lamps are determined by the design of the installation.

Product data

General Information	
Cap-Base	G13 ROT (Rotating) [Medium Bi-Pin Fluorescent]
EU RoHS compliant	Yes
Nominal Lifetime (Nom)	60000 h
Switching Cycle	50000X
Light Technical	
Colour Code	840 [CCT of 4000K]
Beam Angle (Nom)	160 °
Luminous Flux (Nom)	2500 lm
Colour Designation	Cool White (CW)
Colour Temperature, horizontal (Nom)	4000 K
Luminous Efficacy (rated) (Nom)	156.00 lm/W
Color Consistency	<6

Colour Rendering Index horiz (Nom)	83
LLMF At End Of Nominal Lifetime (Nom)	70 %
Operating and Electrical	
Input Frequency	20000-75000 Hz
Power (Rated) (Nom)	16 W
Lamp Current (Max)	750 mA
Lamp Current (Min)	300 mA
Starting Time (Nom)	0.5 s
Warm Up Time to 60% Light (Nom)	0.5 s
Power Factor (Nom)	0.9
Voltage (Nom)	30-80 V
Temperature	
T-Ambient (Max)	45 °C

MASTER LEDtube InstantFit HF

T-Ambient (Min)	-20 °C
T-Storage (Max)	65 °C
T-Storage (Min)	-40 °C
T-Case Maximum (Nom)	55 °C

Controls and Dimming

Dimmable	No
----------	----

Mechanical and Housing

Bulb Material	Plastic
Product Length	1200 mm

Approval and Application

Energy Efficiency Label	A++
Energy Saving Product	Yes

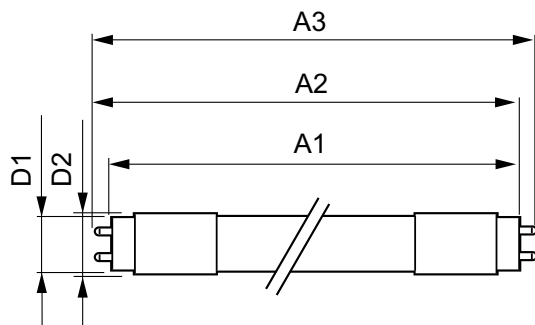
Approval Marks	RoHS compliance TUV CE marking KEMA Keur certificate
----------------	------------------------------------------------------

Energy Consumption kWh/1000 h	20 kWh
-------------------------------	--------

Product Data

Full product code	871869668796300
Order product name	MASTER LEDtube HF 1200mm UO 16W840 T8
EAN/UPC - Product	8718696687963
Order code	68796300
Numerator - Quantity Per Pack	1
Numerator - Packs per outer box	10
Material Nr. (12NC)	929001300002
Net Weight (Piece)	0.360 kg

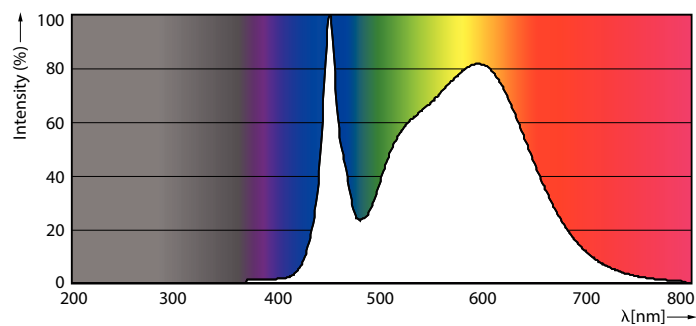
Dimensional drawing



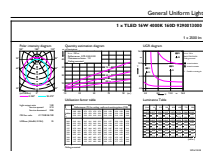
MAS LEDtube HF 1200mm UO 18W840 T8

Product	D1	D2	A1	A2	A3
MASTER LEDtube HF 1200mm UO 16W840 T8	25.6 mm	28 mm	1198.1 mm	1205.2 mm	1212.3 mm

Photometric data



MAS LEDtube HF 1200mm UO 16W840 T8



MAS LEDtube HF 1200mm UO 16W840 T8

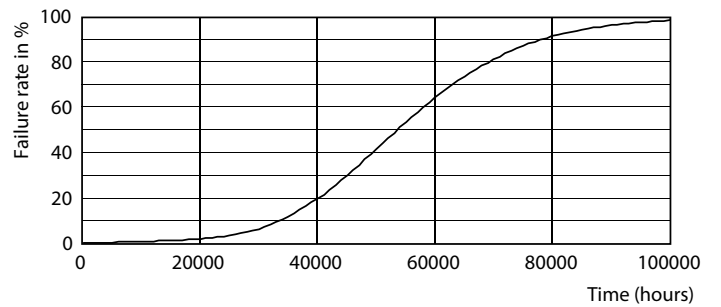
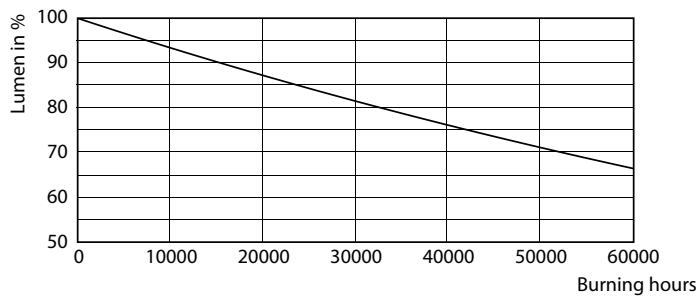
MASTER LEDtube InstantFit HF

Photometric data



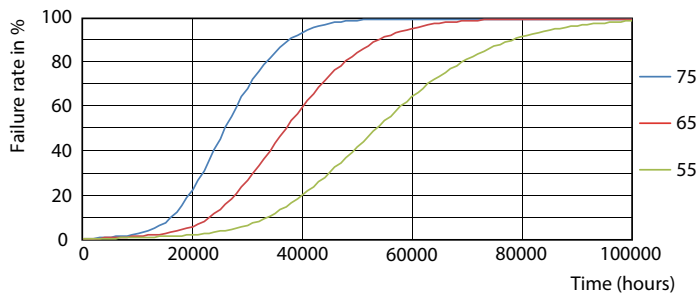
LEDtube HF 1200mm 1500mm UO T8

Lifetime



LEDtube HF 1500mm 26W G5 T5

LEDtube HF 1200mm 1500mm UO T8



LEDtube HF HO-UO 14-24W G13 830-865 T8

LEDtube HF 1200mm HO-UO 14-16W G13 830-865 T8

MASTER LEDtube InstantFit HF

Lifetime



LEDtube HF HO-UO 14-24W G13 830-865 T8

