



MASTER LEDtube EM/ Mains

MASTER LEDtube 1200mm UE 14.5W 865 T8

The Philips MASTER LEDtube integrates a LED light source into a traditional fluorescent form factor. Its unique design creates a perfectly uniform visual appearance which cannot be distinguished from traditional fluorescent. For those that are looking for value for money within limited budget and re-lamping efforts for better light effect and lifetime.

Product data

General Information	
Cap-Base	G13 ROT (Rotating) [Medium Bi-Pin Fluorescent]
EU RoHS compliant	Yes
Nominal Lifetime (Nom)	70000 h
Switching Cycle	200000X
Light Technical	
Colour Code	865 [CCT of 6500K]
Beam Angle (Nom)	160 °
Luminous Flux (Nom)	2500 lm
Colour Designation	Cool Daylight
Colour Temperature, horizontal (Nom)	6500 K
Luminous Efficacy (rated) (Nom)	172.00 lm/W
Color Consistency	<6
Colour Rendering Index horiz (Nom)	83
LLMF At End Of Nominal Lifetime (Nom)	70 %
Operating and Electrical	
Input Frequency	50 to 60 Hz

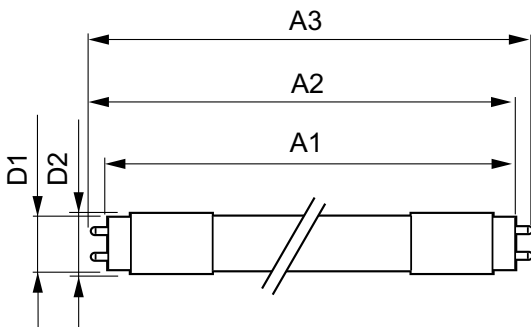
Power (Rated) (Nom)	14.5 W
Lamp Current (Max)	74 mA
Lamp Current (Min)	56 mA
Starting Time (Nom)	0.5 s
Warm Up Time to 60% Light (Nom)	0.5 s
Power Factor (Nom)	0.9
Voltage (Nom)	220-240 V
Temperature	
T-Ambient (Max)	35 °C
T-Ambient (Min)	-20 °C
T-Storage (Max)	65 °C
T-Storage (Min)	-40 °C
T-Case Maximum (Nom)	55 °C
Controls and Dimming	
Dimmable	No
Mechanical and Housing	
Bulb Material	Plastic

MASTER LEDtube EM/Mains

Product Length	1200 mm
Approval and Application	
Energy Efficiency Label	A++
Energy Saving Product	Yes
Approval Marks	TUV CE marking RoHS compliance KEMA Keur certificate
Energy Consumption kWh/1000 h	15 kWh
Product Data	
Full product code	871869673152900

Order product name	MASTER LEDtube 1200mm UE 14.5W 865 T8
EAN/UPC - Product	8718696731529
Order code	73152900
Numerator - Quantity Per Pack	1
Numerator - Packs per outer box	10
Material Nr. (12NC)	929001376902
Net Weight (Piece)	0.270 kg

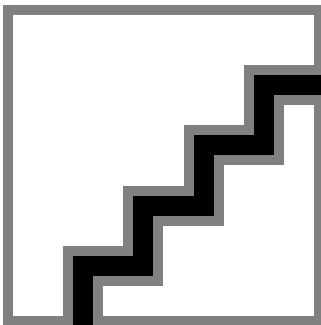
Dimensional drawing



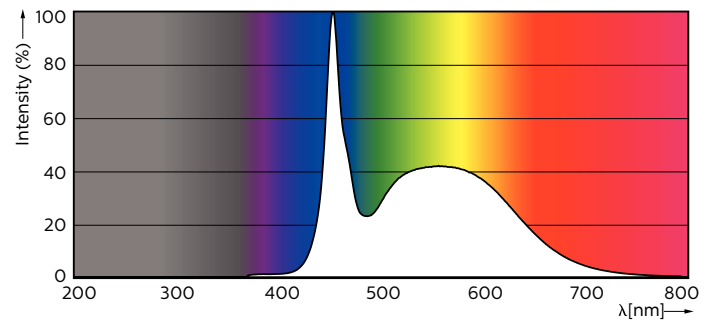
TLED 4ft 14.5-36W 2500lm 6500K G13 ND

Product	D1	D2	A1	A2	A3
MASTER LEDtube 1200mm UE 14.5W 865 T8	25.8 mm	28 mm	1198.2 mm	1205.3 mm	1212.4 mm

Photometric data



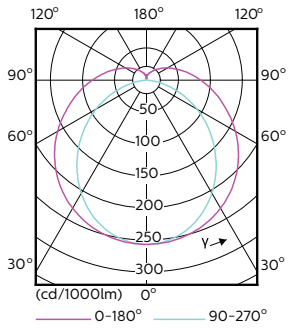
LEDtube 1200mm 15W G13 865 2500lm



LEDtube 1200mm 15W G13 865 2500lm

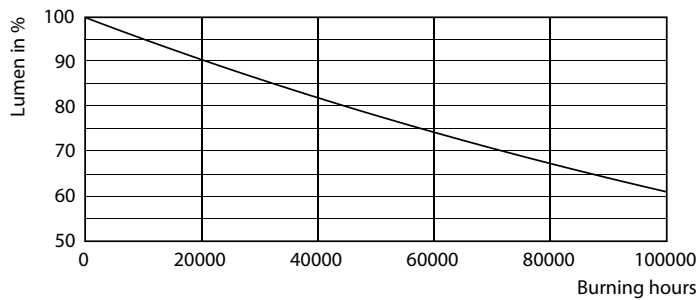
MASTER LEDtube EM/Mains

Photometric data

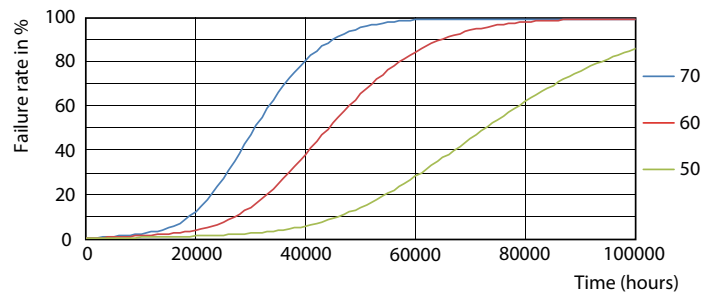


LEDtube 1200mm 15W G13 840 2500lm

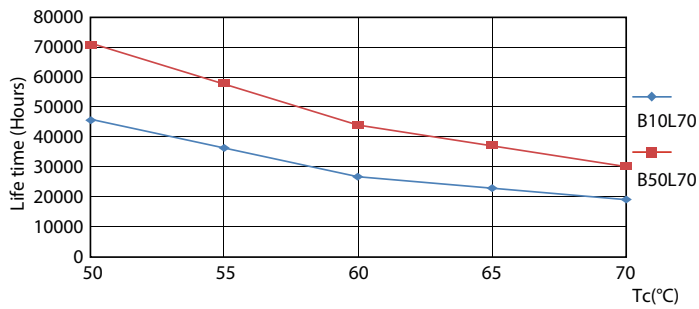
Lifetime



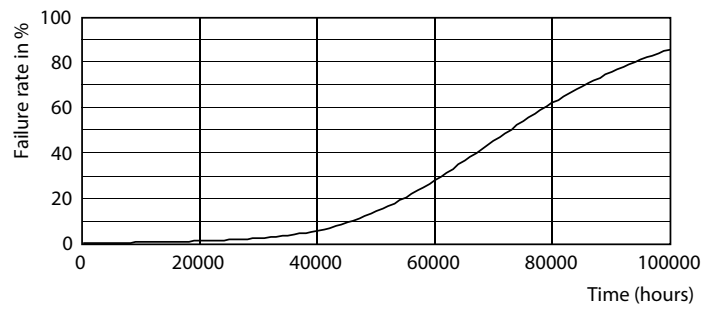
LEDtube G13 ND



LEDtube G13 ND FailureRate



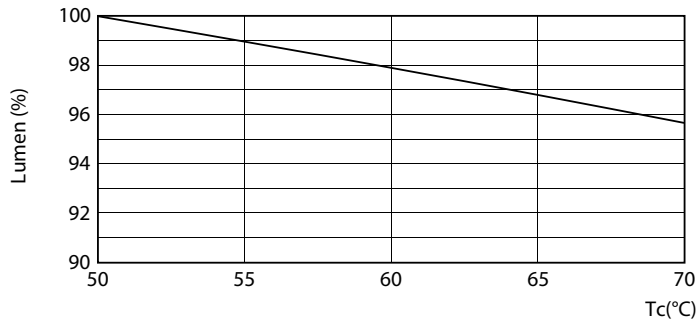
LEDtube G13 ND LifetimeVsTc



LEDtube G13 ND

MASTER LEDtube EM/Mains

Lifetime



LEDtube G13 14.5W ND LumenVsTc

