

# MASTER LEDtube InstantFit HF

## MASTER LEDtube HF 600mm HO 8W865 T8

The Philips MASTER LEDtube integrates a LED light source into a traditional fluorescent form factor. Its unique design creates a perfectly uniform visual appearance which cannot be distinguished from traditional fluorescent. The MASTER LEDtube Performance is the ideal solution for customers which have higher light requirements and the want to maximize value over lifetime.(need the longest lifetime). Full energy savings and TCO benefits.

### Warnings and Safety

- NOTES: The overall energy efficiency and light distribution of any installation that uses these lamps are determined by the design of the installation.

### Product data

General Information	
Cap-Base	G13 ROT (Rotating) [ Medium Bi-Pin Fluorescent]
EU RoHS compliant	Yes
Nominal Lifetime (Nom)	60000 h
Switching Cycle	50000X
Light Technical	
Colour Code	865 [ CCT of 6500K]
Beam Angle (Nom)	160 °
Luminous Flux (Nom)	1050 lm
Colour Designation	Cool Daylight
Colour Temperature, horizontal (Nom)	6500 K
Luminous Efficacy (rated) (Nom)	131.00 lm/W
Color Consistency	<6

Colour Rendering Index horiz (Nom)	83
LLMF At End Of Nominal Lifetime (Nom)	70 %
Operating and Electrical	
Input Frequency	20000-80000 Hz
Power (Rated) (Nom)	8 W
Lamp Current (Max)	500 mA
Lamp Current (Min)	150 mA
Starting Time (Nom)	0.5 s
Warm Up Time to 60% Light (Nom)	0.5 s
Power Factor (Nom)	0.9
Voltage (Nom)	20-50 V
Temperature	
T-Ambient (Max)	45 °C

# MASTER LEDtube InstantFit HF

T-Ambient (Min)	-20 °C
T-Storage (Max)	65 °C
T-Storage (Min)	-40 °C
T-Case Maximum (Nom)	60 °C

## Controls and Dimming

Dimmable	No
----------	----

## Mechanical and Housing

Bulb Material	Plastic
Product Length	600 mm

## Approval and Application

Energy Efficiency Label	A+
Energy Saving Product	Yes

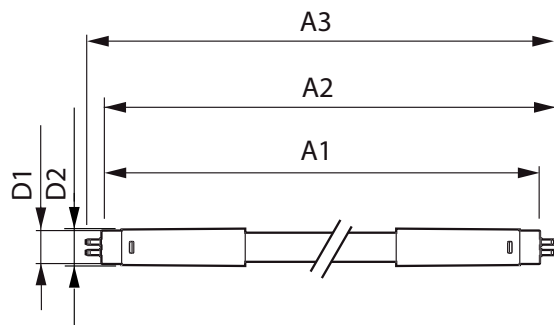
Approval Marks	RoHS compliance TUV CE marking KEMA Keur certificate
----------------	--

Energy Consumption kWh/1000 h	10 kWh
-------------------------------	--------

## Product Data

Full product code	871869674367600
Order product name	MASTER LEDtube HF 600mm HO 8W865 T8
EAN/UPC - Product	8718696743676
Order code	74367600
Numerator - Quantity Per Pack	1
Numerator - Packs per outer box	10
Material Nr. (12NC)	929001393302
Net Weight (Piece)	0.160 kg

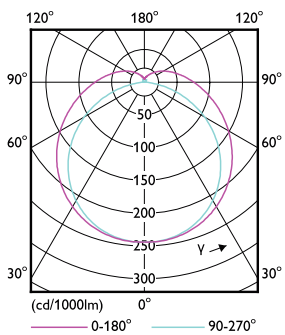
## Dimensional drawing



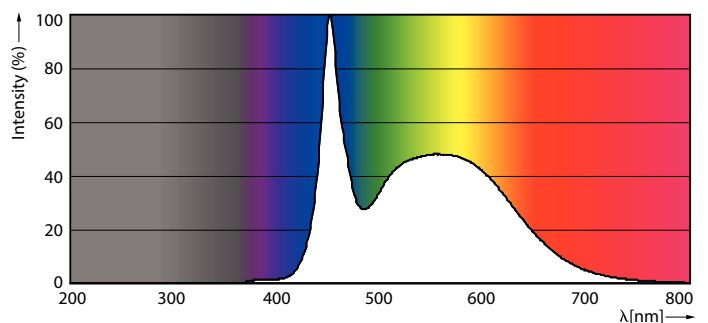
MAS LEDtube HF 600mm 10.5W865 T8

Product	D1	D2	A1	A2	A3
MASTER LEDtube HF 600mm HO 8W865 T8	25.6 mm	28 mm	588.6 mm	595.7 mm	602.8 mm

## Photometric data



8W G13 830 3000K

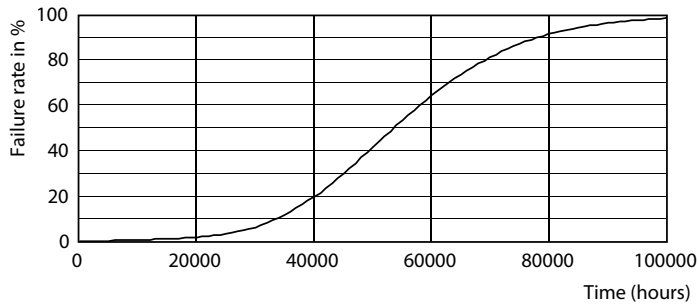


8W G13



# MASTER LEDtube InstantFit HF

## Lifetime



8W G13

