



MASTER LEDtube EM/ Mains



MASTER LEDtube 1200mm HO 12.5W 840 T8

The Philips MASTER LEDtube integrates a LED light source into a traditional fluorescent form factor. Its unique design creates a perfectly uniform visual appearance which cannot be distinguished from traditional fluorescent. For those that are looking for value for money within limited budget and re-lamping efforts for better light effect and lifetime.

Warnings and Safety

• -

Product data

General information	
Cap-Base	G13 ROT (Rotating) [Medium Bi-Pin Fluorescent]
EU RoHS compliant	Yes
Nominal Lifetime (Nom)	75000 h
Switching Cycle	200000X
Flux measurement reference	Sphere
Light technical	
Colour Code	840 [CCT of 4000K]
Beam Angle (Nom)	160 °
Luminous Flux (Nom)	2100 lm
Colour Designation	Cool White (CW)
Colour Temperature, horizontal (Nom)	4000 K
Luminous Efficacy (rated) (Nom)	168.00 lm/W
Color Consistency	<6
Colour Rendering Index horiz (Nom)	80

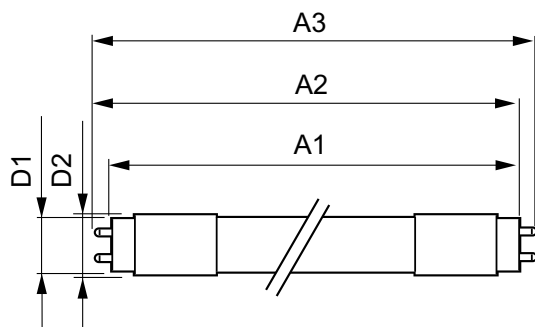
LLMF At End Of Nominal Lifetime (Nom) 70 %	
Operating and electrical	
Input Frequency	50 to 60 Hz
Power (Rated) (Nom)	12.5 W
Lamp Current (Max)	63 mA
Lamp Current (Min)	52 mA
Starting Time (Nom)	0.5 s
Warm Up Time to 60% Light (Nom)	0.5 s
Power Factor (Nom)	0.9
Voltage (Nom)	220-240 V
Temperature	
T-Ambient (Max)	45 °C
T-Ambient (Min)	-20 °C
T-Storage (Max)	65 °C
T-Storage (Min)	-40 °C

MASTER LEDtube EM/Mains

T-Case Maximum (Nom)	50 °C
Controls and dimming	
Dimmable	No
Mechanical and housing	
Bulb Finish	Frosted
Bulb Material	Plastic
Product Length	1200 mm
Bulb Shape	Tube, double-ended
Approval and application	
Energy Efficiency Class	C
Energy Saving Product	Yes
Approval Marks	RoHS compliance CE marking KEMA Keur certificate

Approval Marks	TUV
Energy Consumption kWh/1000 h	13 kWh
EPREL Registration Number	403591
Product data	
Full product code	871869959237000
Order product name	MASTER LEDtube 1200mm HO 12.5W 840 T8
EAN/UPC - Product	8718699592370
Order code	59237000
Numerator - Quantity Per Pack	1
Numerator - Packs per outer box	10
Material Nr. (12NC)	929001922702
Net Weight (Piece)	0.230 kg

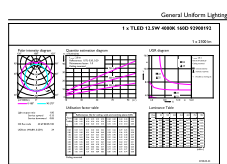
Dimensional drawing



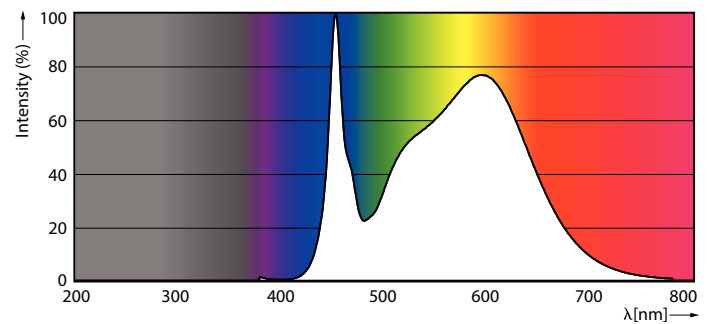
MASTER LEDtube 1200mm HO 12.5W 840 T8

Product	D1	D2	A1	A2	A3
MASTER LEDtube 1200mm HO 12.5W 840 T8	25.8 mm	28 mm	1198.2 mm	1205.3 mm	1212.4 mm

Photometric data



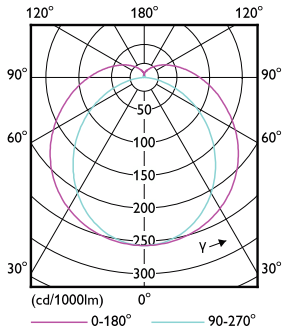
General uniform lighting



Spectral Power Distribution Colour

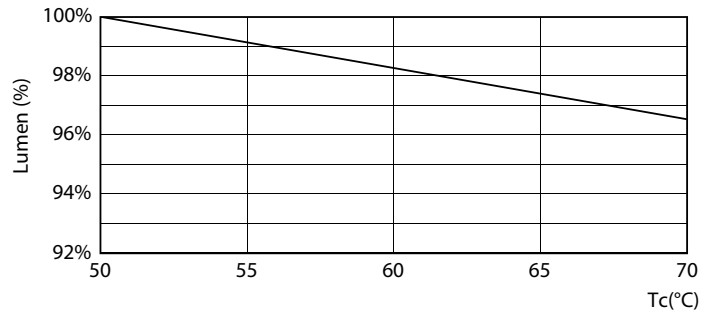
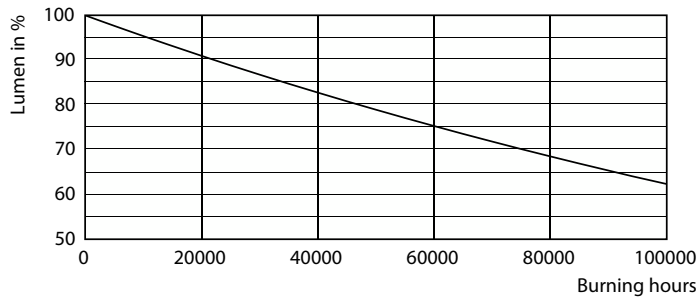
MASTER LEDtube EM/Mains

Photometric data



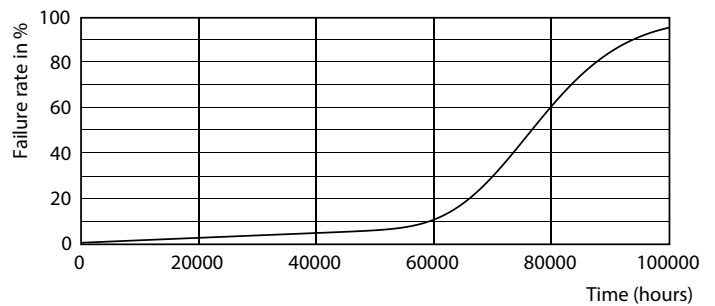
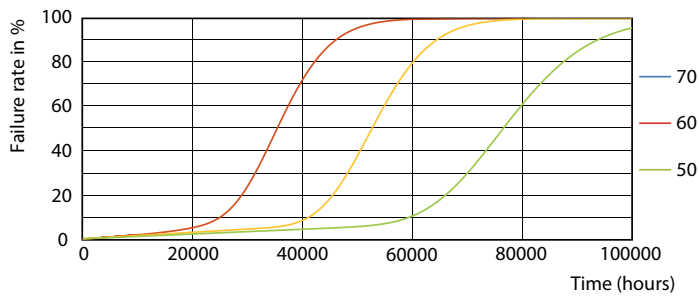
Light Distribution Diagram

Lifetime



Lumen Maintenance Diagram

LumenVsTc



FailureRate

Life Expectancy Diagram

MASTER LEDtube EM/Mains

Lifetime



LifetimeVsTc

