



# MASTER LEDtube EM/ Mains T8



## MASTER LEDtube 1500mm HO 18.2W 865 T8

The Philips MASTER LEDtube integrates a LED light source into a traditional fluorescent form factor. Its unique design creates a perfectly uniform visual appearance which cannot be distinguished from traditional fluorescent. For those that are looking for value for money within limited budget and re-lamping efforts for better light effect and lifetime.

### Warnings and Safety

• -

### Product data

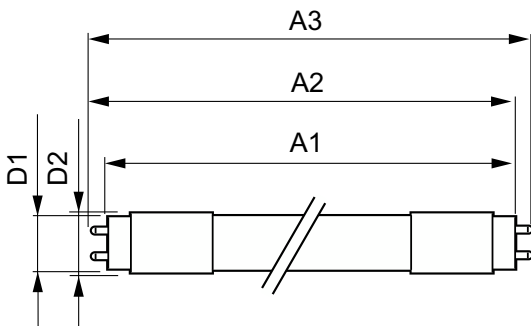
General Information		Color Consistency	
Cap-Base	G13 ROT (Rotating) [Medium Bi-Pin Fluorescent]	Color rendering index (CRI)	<6
Nominal lifetime	75,000 hour(s)	LLMF At End Of Nominal Lifetime (Nom)	80
Switching Cycle	200,000	Flickering value (PstLM)	70 %
Lighting Technology	LED	Stroboscopic effect value (SVM)	0.5
Flux measurement reference	Sphere	Photobiological safety according to EN 62471	0.2
CE mark	Yes	Operating and Electrical	
EU RoHS compliant	Yes	Line Frequency	50 to 60 Hz
Light Technical		Input Frequency	50 to 60 Hz
Color Code	865 [CCT of 6500K]	Power Consumption	18.2 W
Beam Angle (Nom)	160 degree(s)	Starting Time (Nom)	0.5 s
Luminous Flux	3,100 lumen	Warm-up time to 60% light	0.5 s
Color Designation	Cool Daylight	Power Factor (Fraction)	0.9
Correlated Color Temperature (Nom)	6500 K	Voltage (Nom)	220-240 V
Luminous Efficacy (rated) (Nom)	170 lm/W	LED alternative to fluorescent lamp power	58 W

# MASTER LEDtube EM/Mains T8

Temperature	
Ambient temperature range	-20 °C to 45 °C
T-Case Maximum (Nom)	55 °C
Controls and Dimming	
Dimmable	No
Mechanical and Housing	
Bulb Finish	Frosted
Bulb Material	Plastic
Product Length	1,500 mm
Bulb Shape	Tube, double-ended
Approval and Application	
Energy Efficiency Class	C
Energy Saving Product	Yes
Approval Marks	RoHS compliance TUV CE marking KEMA Keur certificate

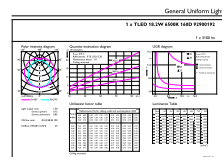
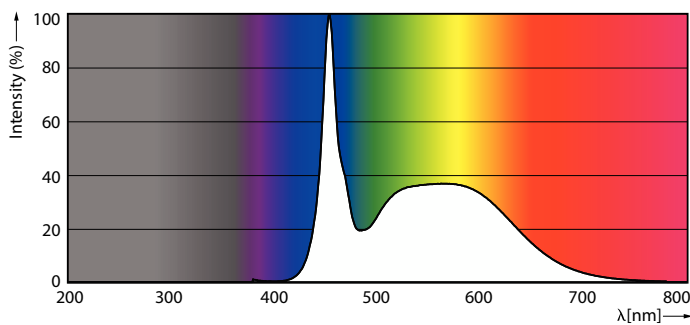
Energy Consumption kWh/1000 h	19 kWh
EPREL Registration Number	1206971
Product Data	
Full product code	871869959245500
Order product name	MAS LEDtube 1500mm HO 18.2W 865 T8
Order code	59245500
Numerator - Quantity Per Pack	1
Numerator - Packs per outer box	10
Material Nr. (12NC)	929001923102
Full product name	MASTER LEDtube 1500mm HO 18.2W 865 T8
EAN/UPC - Case	8718699592462
EAN/UPC - Product/Case	8718699592455

## Dimensional drawing



Product	D1	D2	A1	A2	A3
MAS LEDtube 1500mm HO 18.2W 865 T8	25.8 mm	28 mm	1,498.8 mm	1,505.9 mm	1,513 mm

## Photometric data

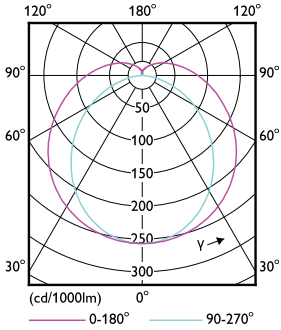


Spectral Power Distribution Colour - MAS LEDtube 1500mm HO 18.2W 865 T8

General uniform lighting - MAS LEDtube 1500mm HO 18.2W 865 T8

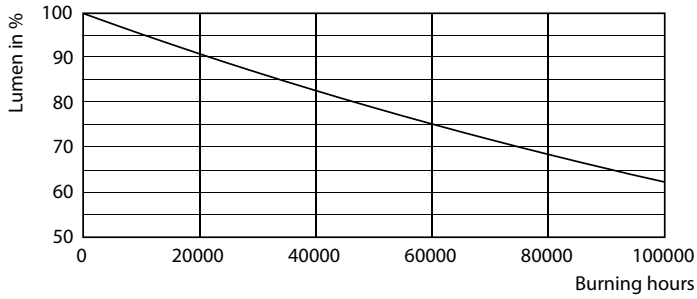
# MASTER LEDtube EM/Mains T8

## Photometric data

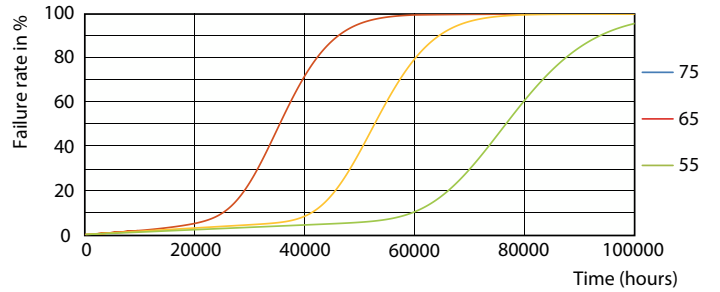


Light Distribution Diagram - MAS LEDtube 1500mm HO 18.2W 865 T8

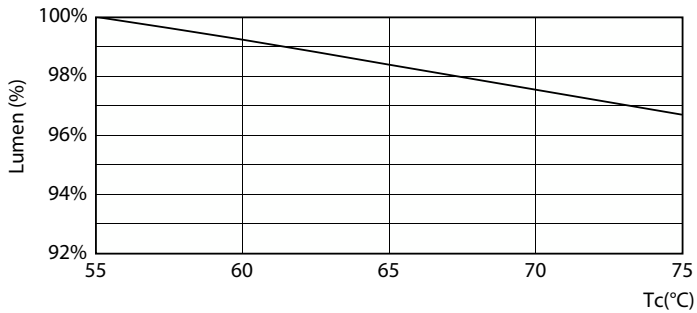
## Lifetime



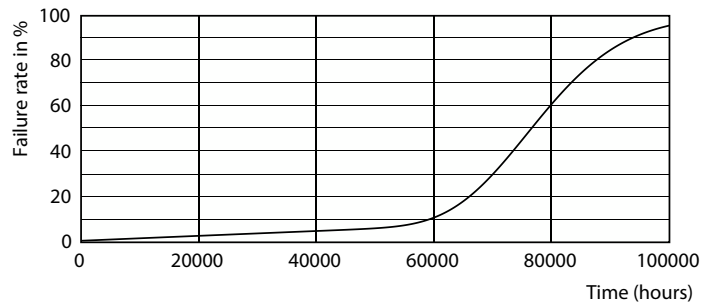
Lumen Maintenance Diagram - MAS LEDtube 1500mm HO 18.2W 865 T8



Life Expectancy Diagram - MAS LEDtube 1500mm HO 18.2W 865 T8



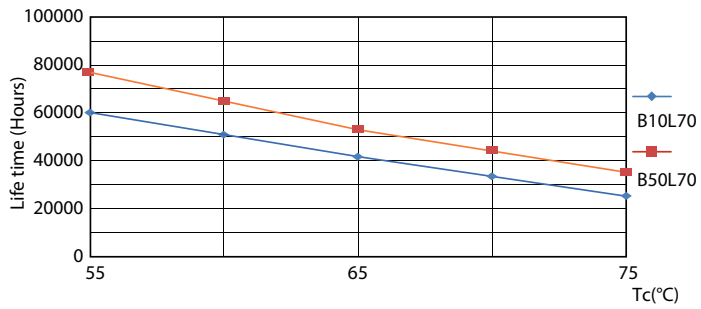
Lumen Maintenance Diagram - MAS LEDtube 1500mm HO 18.2W 865 T8



Life Expectancy Diagram - MAS LEDtube 1500mm HO 18.2W 865 T8

# MASTER LEDtube EM/Mains T8

## Lifetime



Life Expectancy Diagram - MAS LEDtube 1500mm HO 18.2W 865 T8

