



# MASTER Value LEDtube T8



## MASTER LEDtube VLE 600mm HO 8W 830 T8

A high-performance LED solution, the professional MASTER Value LED tube is ideal for replacing T8 fluorescent lamps using EM ballast or installing directly on the mains. This product provides an optimal combination of value and performance – for use in all general lighting, office, industry, retail, and hospitality applications. The unique design of this LED T8 tube light offers wide compatibility, safety and fast installation, as well as instant energy savings.

### Product data

General information	
Cap-Base	G13 [ Medium Bi-Pin Fluorescent]
EU RoHS compliant	Yes
Nominal Lifetime (Nom)	60000 h
Switching Cycle	200000X
Flux measurement reference	Sphere

Light technical	
Colour Code	830 [ CCT of 3000K]
Beam Angle (Nom)	190 °
Luminous Flux (Nom)	1000 lm
Colour Designation	White (WH)
Colour Temperature, horizontal (Nom)	3000 K
Luminous Efficacy (rated) (Nom)	125.00 lm/W
Color Consistency	<6
Colour Rendering Index horiz (Nom)	80
LLMF At End Of Nominal Lifetime (Nom)	70 %

Operating and electrical	
Input Frequency	50 to 60 Hz
Power (Rated) (Nom)	8 W
Lamp Current (Max)	38 mA
Lamp Current (Min)	34 mA
Starting Time (Nom)	0.5 s
Warm Up Time to 60% Light (Nom)	0.5 s
Power Factor (Nom)	0.9
Voltage (Nom)	220-240 V

Temperature	
T-Ambient (Max)	45 °C
T-Ambient (Min)	-20 °C
T-Storage (Max)	65 °C
T-Storage (Min)	-40 °C
T-Case Maximum (Nom)	55 °C

# MASTER Value LEDtube T8

## Controls and dimming

Dimmable	No
----------	----

## Mechanical and housing

Bulb Finish	Frosted
Bulb Material	Glass
Product Length	600 mm
Bulb Shape	Tube, double-ended

## Approval and application

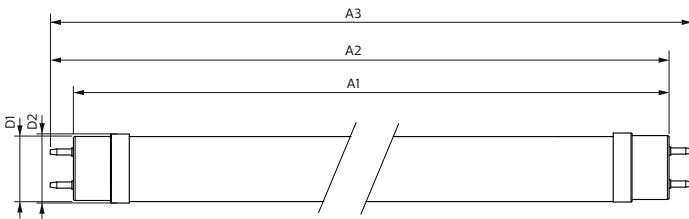
Energy Efficiency Class	E
Energy Saving Product	Yes
Approval Marks	RoHS compliance TUV CE marking KEMA Keur certificate

Energy Consumption kWh/1000 h	8 kWh
EPREL Registration Number	1095862

## Product data

Full product code	871869964679000
Order product name	MASTER LEDtube VLE 600mm HO 8W 830 T8
EAN/UPC - Product	8718699646790
Order code	64679000
Numerator - Quantity Per Pack	1
Numerator - Packs per outer box	10
Material Nr. (12NC)	929002021102
Net Weight (Piece)	0.110 kg

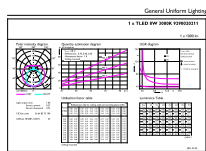
## Dimensional drawing



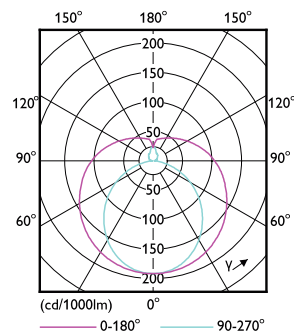
Product	D1	D2	A1	A2	A3
MASTER LEDtube VLE 600mm HO 8W 830 T8	25.8 mm	28 mm	588.5 mm	595.5 mm	602.5 mm

## MASTER LEDtube VLE 600mm HO 8W 830 T8

## Photometric data



OSRAM PHOTONICS AG | Nürnberg, DE | Page 11

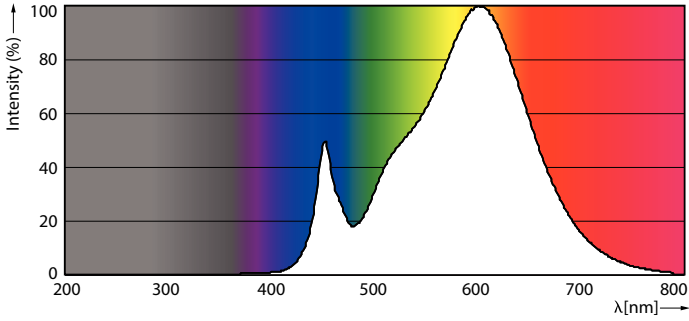


## LEDtube MAS SLR 8W G13 1000lm-LDD

## LEDtube MAS SLR 8W G13 1000lm 830-GUL

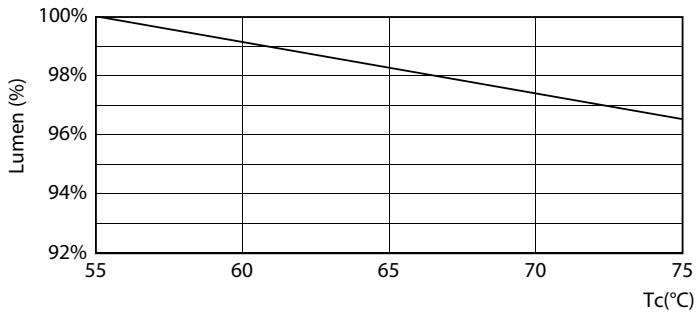
# MASTER Value LEDtube T8

## Photometric data

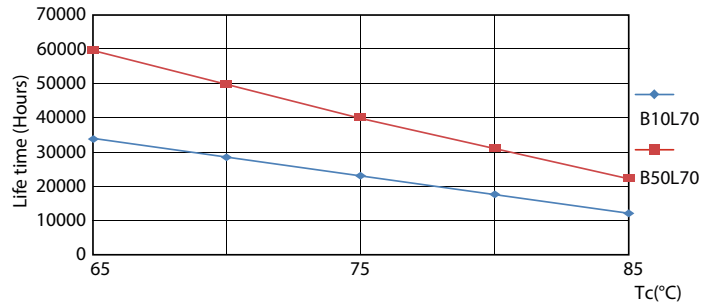


LEDtube 220-240V G13 3000k

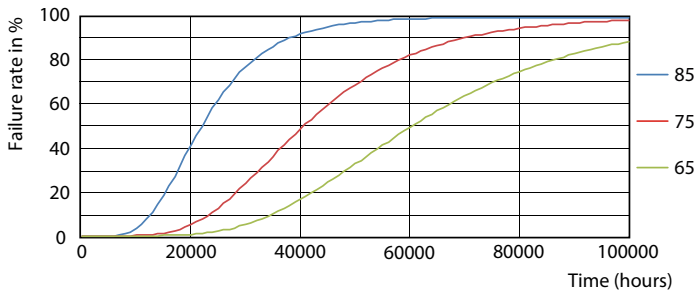
## Lifetime



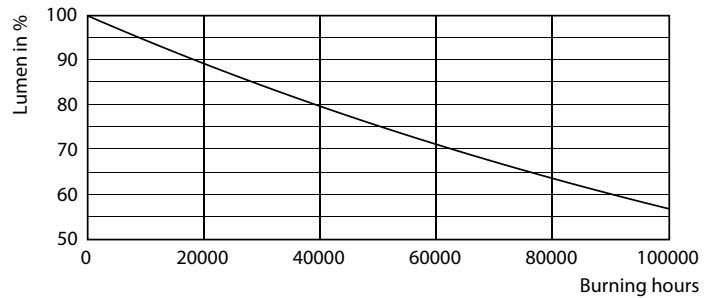
LEDtube MAS SLR 8W 60K LumenVsTc-LMP



LEDtube MAS SLR 8W 60K LifetimeVsTc-LED



LEDtube MAS SLR 8W 60K FailureRate-LED



LEDtube\_60K

# MASTER Value LEDtube T8

## Lifetime



LEDtube\_60K

