



# MASTER Value LEDtube T8



## MASTER LEDtube VLE 1500mm HO 20.5W 840 T8

A high-performance LED solution, the professional MASTER Value LED tube is ideal for replacing T8 fluorescent lamps using EM ballast or installing directly on the mains. This product provides an optimal combination of value and performance – for use in all general lighting, office, industry, retail, and hospitality applications. The unique design of this LED T8 tube light offers wide compatibility, safety and fast installation, as well as instant energy savings.

### Product data

General information	
Cap-Base	G13 [ Medium Bi-Pin Fluorescent]
EU RoHS compliant	Yes
Nominal Lifetime (Nom)	60000 h
Switching Cycle	200000
Flux measurement reference	Sphere

Light technical	
Colour Code	840 [ CCT of 4000K]
Beam Angle (Nom)	190 °
Luminous Flux (Nom)	3100 lm
Colour Designation	Cool White (CW)
Colour Temperature, horizontal (Nom)	4000 K
Luminous Efficacy (rated) (Nom)	151 lm/W
Color Consistency	<6
Colour Rendering Index horiz (Nom)	80
LLMF At End Of Nominal Lifetime (Nom)	70 %

Operating and electrical	
Input Frequency	50 to 60 Hz
Power (Rated) (Nom)	20.5 W
Lamp Current (Max)	97 mA
Lamp Current (Min)	89 mA
Starting Time (Nom)	0.5 s
Warm Up Time to 60% Light (Nom)	0.5 s
Power Factor (Nom)	0.9
Voltage (Nom)	220-240 V

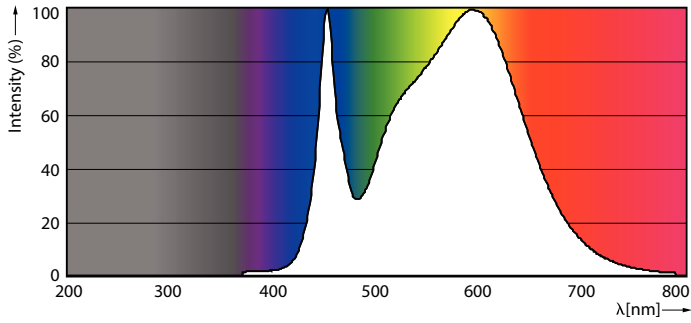
  

Temperature	
T-Ambient (Max)	45 °C
T-Ambient (Min)	-20 °C
T-Storage (Max)	65 °C
T-Storage (Min)	-40 °C
T-Case Maximum (Nom)	65 °C



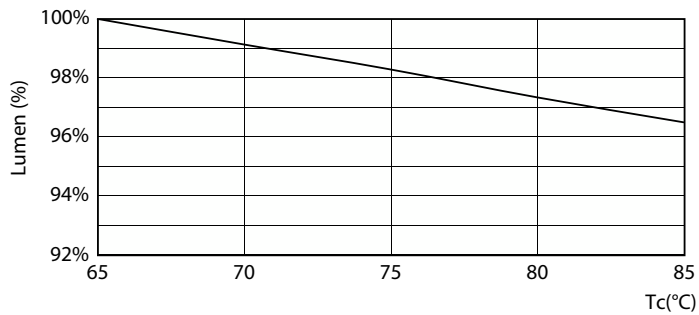
# MASTER Value LEDtube T8

## Photometric data

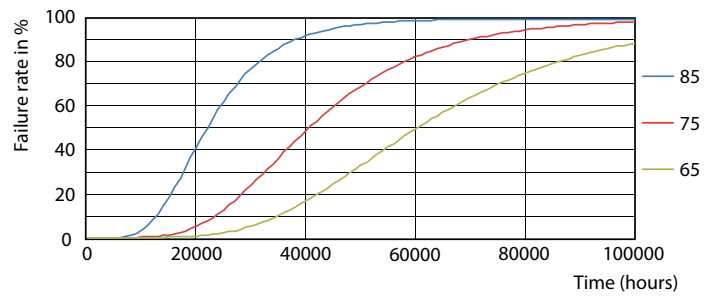


Spectral Power Distribution Colour

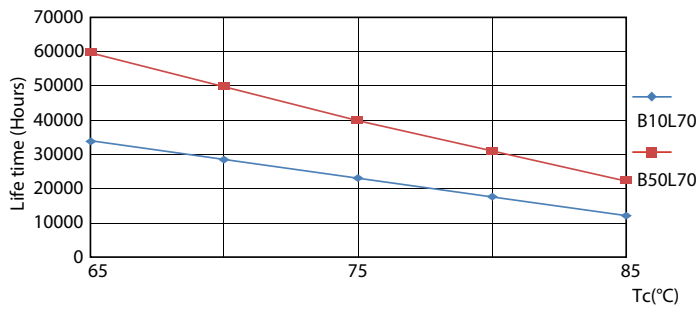
## Lifetime



LumenVsTc



FailureRate



LifetimeVsTc



Lumen Maintenance Diagram

# MASTER Value LEDtube T8

## Lifetime



### Life Expectancy Diagram

