



MASTER LEDtube InstantFit HF T5



Master LEDtube HF 1500mm HO 26W 840 T5 OE

The Philips MASTER LEDtube integrates a LED light source into a traditional fluorescent form factor. Its unique design creates a perfectly uniform visual appearance, which cannot be distinguished from traditional fluorescent. These T5 lighting tubes are the right choice for absolute performance and are designed to stand up to everyday conditions. Unparalleled savings thanks to low energy consumption and an exceptionally long lifetime make these T5 LED tubes the choice for every demanding application.

Product data

General information	
Cap-Base	G5 [G5]
EU RoHS compliant	Yes
Nominal Lifetime (Nom)	60000 h
Switching Cycle	50000X
Technical Type	26-49W
Flux measurement reference	Sphere

Light technical	
Colour Code	840 [CCT of 4000K]
Beam Angle (Nom)	200 °
Luminous Flux (Nom)	3900 lm
Colour Designation	Cool White (CW)
Colour Temperature, horizontal (Nom)	4000 K
Luminous Efficacy (rated) (Nom)	150.00 lm/W
Color Consistency	<6
Colour Rendering Index horiz (Nom)	80

LLMF At End Of Nominal Lifetime (Nom) 70 %	
--	--

Operating and electrical	
Input Frequency	20K to 140K Hz
Power (Rated) (Nom)	26 W
Lamp Current (Max)	420 mA
Lamp Current (Min)	150 mA
Starting Time (Nom)	0.5 s
Warm Up Time to 60% Light (Nom)	0.5 s
Power Factor (Nom)	0.9
Voltage (Nom)	60-120 V

Temperature	
T-Ambient (Max)	45 °C
T-Ambient (Min)	-20 °C
T-Storage (Max)	65 °C
T-Storage (Min)	-40 °C

MASTER LEDtube InstantFit HF T5

T-Case Maximum (Nom)	50 °C
----------------------	-------

Controls and dimming

Dimmable	Yes - Check ballast compatibility
----------	-----------------------------------

Mechanical and housing

Bulb Finish	Frosted
Bulb Material	Glass
Product Length	1500 mm
Bulb Shape	Tube, double-ended

Approval and application

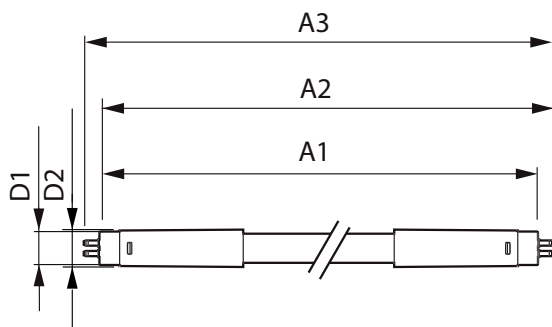
Energy Efficiency Class	D
Energy Saving Product	Yes
Approval Marks	RoHS compliance TUV CE marking KEMA Keur certificate

Energy Consumption kWh/1000 h	26 kWh
EPREL Registration Number	406213

Product data

Full product code	871869974959000
Order product name	Master LEDtube HF 1500mm HO 26W 840 T5 OE
	OE
EAN/UPC - Product	8718699749590
Order code	74959000
Numerator - Quantity Per Pack	1
Numerator - Packs per outer box	10
Material Nr. (12NC)	929002352402
Net Weight (Piece)	0.380 kg

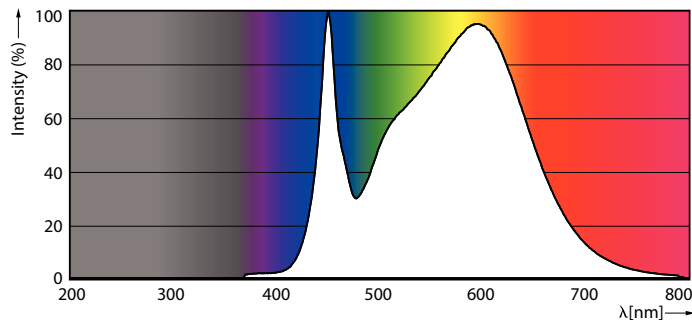
Dimensional drawing



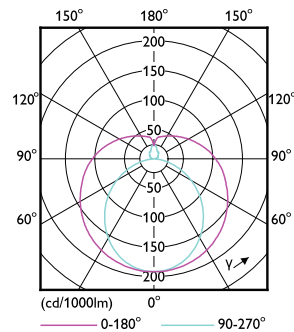
Master LEDtube HF 1500mm HO 26W 840 T5 OE

Product	D1	D2	A1	A2	A3
Master LEDtube HF 1500mm HO 26W 840 T5 OE	15.5 mm	19 mm	1449 mm	1456 mm	1463 mm

Photometric data



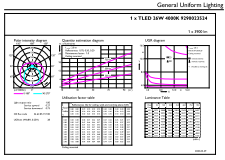
LEDtube MAS 26W G5 3900lm 840



LEDtube MAS 26W G5 3700lm

MASTER LEDtube InstantFit HF T5

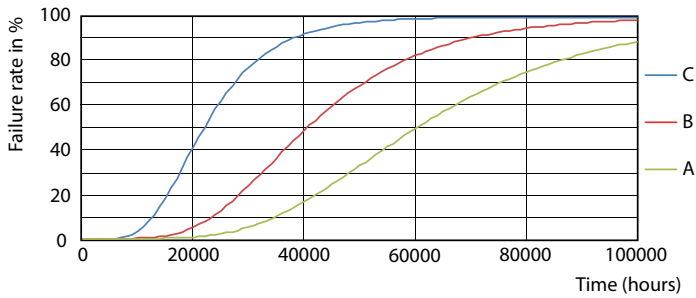
Photometric data



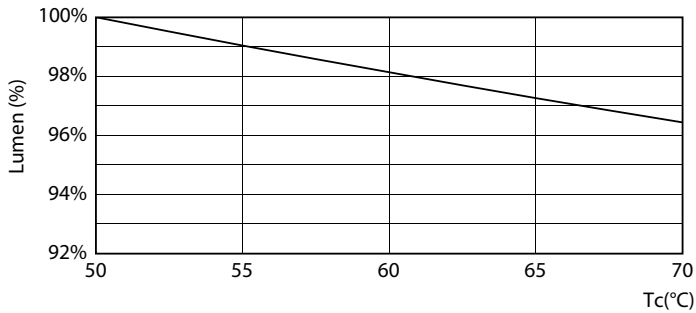
© 2022 Philips Lighting B.V. Page 10

LEDtube MAS 26W G5 3900lm 840 1500mm

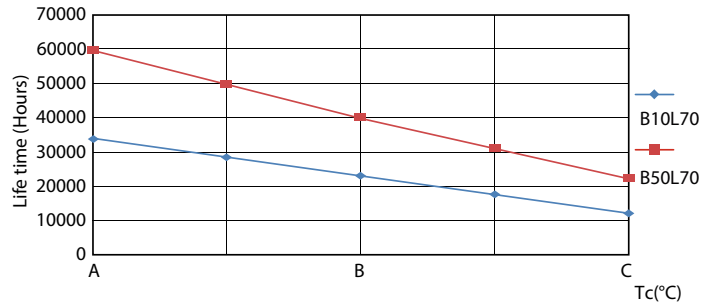
Lifetime



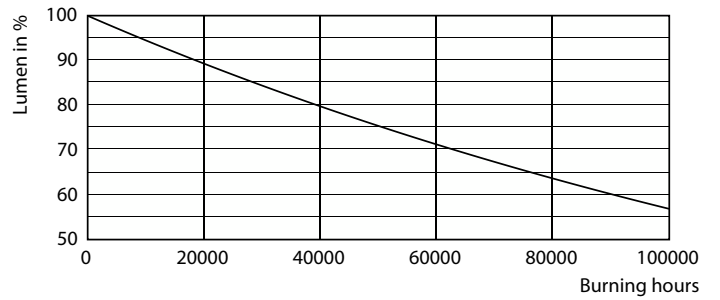
LEDtube_60K_FailureRate



LEDtube 26W 60K LumenVsTc 2



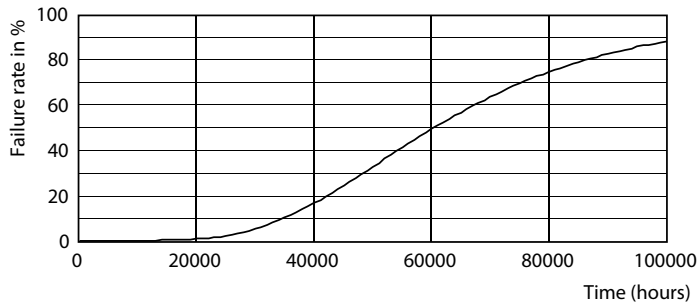
LEDtube_60K_LifetimeVsTc



LEDtube_60K

MASTER LEDtube InstantFit HF T5

Lifetime



LEDtube_60K

