



# MASTER Value LEDtube Universal T8



## MAS LEDtube VLE UN 1500mm UO 23W830 T8

The new Philips MASTER Value LEDtube Universal T8 brings ease and simplicity to your lighting project. That's because you do not need to match the driver technology anymore: a unique design enables the Philips MASTER Value LEDtube Universal T8 to directly fit in luminaires operating on either electromagnetic ballasts or HF electronic ballasts or mains power connection. It is so simple to operate and you no longer need to stock two types of tubes! Perfectly safe, reliable & easy to install Philips MASTER Value LEDtube Universal T8 is the ideal alternative to standard fluorescent tubes to maximize value over lifetime with high energy saving and lower maintenance costs.

### Product data

General information		LLMF At End Of Nominal Lifetime (Nom) 70 %	
Cap-Base	G13 [ Medium Bi-Pin Fluorescent]	<b>Operating and electrical</b>	
EU RoHS compliant	Yes	Input Frequency	50 to 60 Hz
Nominal Lifetime (Nom)	60000 h	Power (Rated) (Nom)	23 W
Switching Cycle	50000X	Lamp Current (Nom)	106 mA
Flux measurement reference	Sphere	Starting Time (Nom)	0.5 s
<b>Light technical</b>		Warm Up Time to 60% Light (Nom)	0.5 s
Colour Code	830 [ CCT of 3000K]	Power Factor (Nom)	0.9
Beam Angle (Nom)	190 °	Voltage (Nom)	220-240 V
Luminous Flux (Nom)	3400 lm	<b>Temperature</b>	
Colour Designation	White (WH)	T-Ambient (Max)	45 °C
Colour Temperature, horizontal (Nom)	3000 K	T-Ambient (Min)	-20 °C
Luminous Efficacy (rated) (Nom)	147.00 lm/W	T-Storage (Max)	65 °C
Color Consistency	<6	T-Storage (Min)	-40 °C
Colour Rendering Index horiz (Nom)	80		

# MASTER Value LEDtube Universal T8

T-Case Maximum (Nom)	60 °C
----------------------	-------

## Controls and dimming

Dimmable	No
----------	----

## Mechanical and housing

Bulb Finish	Frosted
Bulb Material	Glass
Product Length	1500 mm
Bulb Shape	Tube, double-ended

## Approval and application

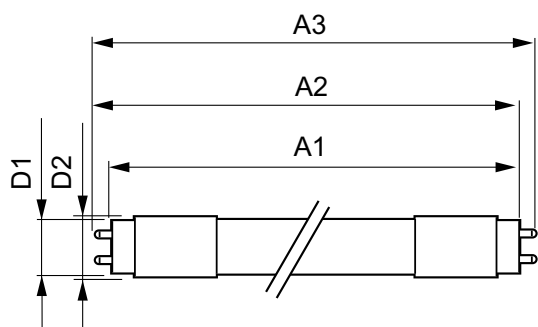
Energy Efficiency Class	D
Energy Saving Product	Yes
Approval Marks	RoHS compliance TUV CE marking KEMA Keur certificate

Energy Consumption kWh/1000 h	23 kWh
EPREL Registration Number	403661

## Product data

Full product code	871951431674400
Order product name	MAS LEDtube VLE UN 1500mm UO 23W830 T8
EAN/UPC - Product	8719514316744
Order code	31674400
Numerator - Quantity Per Pack	1
Numerator - Packs per outer box	10
Material Nr. (12NC)	929002997302
Net Weight (Piece)	0.290 kg

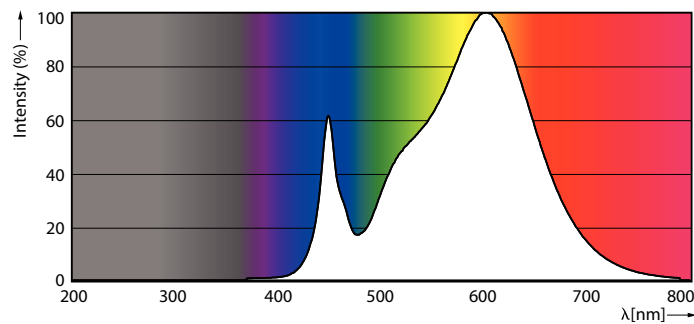
## Dimensional drawing



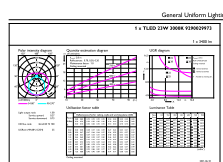
MAS LEDtube VLE UN 1500mm UO 23W830 T8

Product	D1	D2	A1	A2	A3
MAS LEDtube VLE UN 1500mm UO 23W830 T8	26 mm	28 mm	1500 mm	1506 mm	1514 mm

## Photometric data



LEDtube MAS 1 15,5W G13 2300lm 830-POC



LEDtube MAS 1 23W G13 3400lm 830-GUL

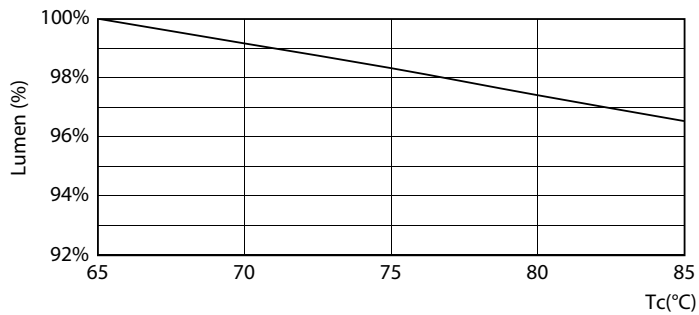
# MASTER Value LEDtube Universal T8

## Photometric data

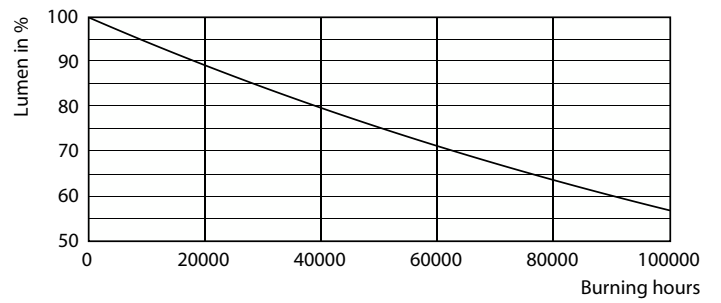


LEDtube MAS 1 15,5W G13 2300lm-LDD

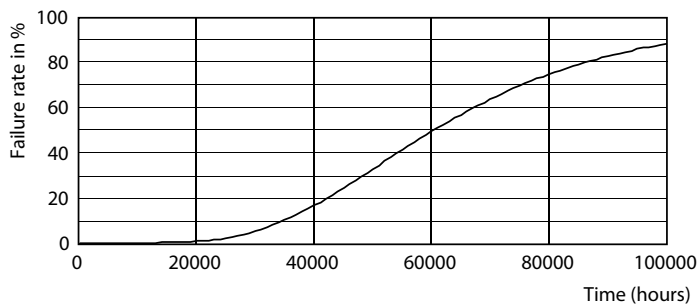
## Lifetime



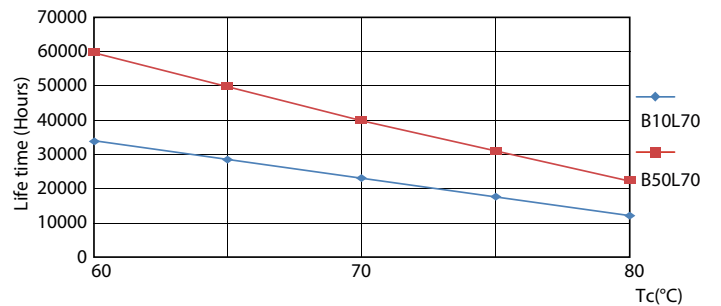
LEDtube MAS 1 23W 60K LumenVsTc-LMP



LEDtube\_60K



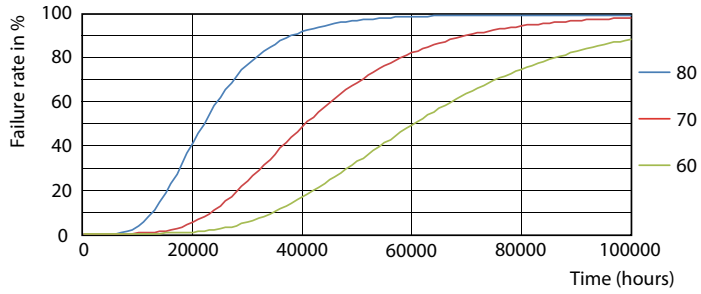
LEDtube\_60K



LEDtube MAS 1 23W 60K LifetimeVsTc-LED

# MASTER Value LEDtube Universal T8

## Lifetime



LEDtube MAS 1 23W 60K FailureRate-LED

