



# Extending the home feel onto the street

## TownTune Asymmetric Lyre DTC

As a luminaire family prepared for existing and scalable urban spaces, TownTune offers all the recent lighting innovations in terms of performance, quality of light and connectivity. The Philips TownTune family consists of three members: a central post top, an asymmetric spigot version and a version using an extending lyre post top bracket. Each of these three can be customized with a choice of different shapes for housing and an optional of decorative ring which comes in two colors. By having these options available you can create your very own lighting signature and give distinctive identity to districts and cities. The luminaire family is also equipped with the QR code-based Philips Service tag, which supports installation and maintenance work and enables you to create your digital library of lighting assets and spare parts. TownTune also makes use of the Philips Ledgine optimized lighting platform ensuring that you always have the right amount and direction of light on your street. Furthermore, thanks to being SR (System Ready), TownTune is also future-proof and is ready to be paired with both standalone and advanced control and lighting software applications such as Interact City.

# TownTune Asymmetric Lyre DTC

## Benefits

- Delivers visual comfort, and comfortable lighting experiences in urban spaces through its dedicatedly designed bowl
- Simple, pure design making it possible to integrate it into various urban environments and the option for customization through a wide range of accessories, lets cities create a unique light signature, which can also become part of the urban furniture in daytime
- Wide application coverage and offers great performance by using the latest Ledgine LED platform and providing access to a wide range of light distributions
- Ready to be paired with lighting control and software applications, by being equipped with the Philips SR (System Ready) socket
- Equipped with Service tag, a QR-based identification system that makes each luminaire uniquely identifiable and provides maintenance, installation and spare part information

## Features

- Optimized Total Cost of Ownership and option of CLO (Constant Light Output)
- Excellent quality of light enabled by the Philips Ledgine optimized platform, and further optimization in L-Tune is also possible
- Choice of different shapes for housing (cone, dome), option of decorative ring and color (clear and golden)
- Ready to be paired with standalone lighting controls such as LumiStep, DynaDimmer, and LineSwitch and advanced system and software application such as Interact City
- Wide choice of lumen packages, ranging from 600 to 12,000 lumens
- Choice of color temperature: 3000 K (warm white) or 4000 K (neutral white)
- Long lifetime of 100,000 hours at minimum L80
- Suitable for new and retrofit installations
- IK08, IP66

## Application

- Urban and residential areas
- City centers and main streets
- Cycle paths, footpaths and pedestrian crossings
- Car parks

## Versions



**BDP272, TownTune Lyre with decorative top cone and clear decorative ring**

# TownTune Asymmetric Lyre DTC

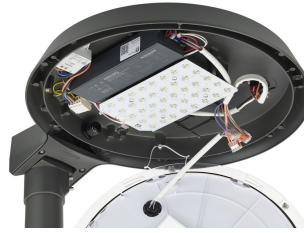
## Product details



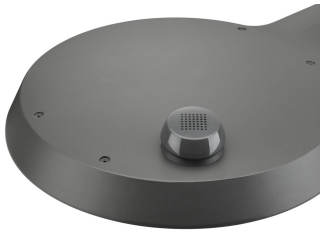
TownTune LYR BDP270



TownTune ASY BDP265



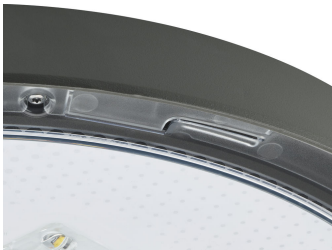
TownTune ASY BDP265



TownTune ASY BDP265



TownTune ASY BDP265



TownTune ASY DR BDP266



TownTune ASY BDP265

# TownTune Asymmetric Lyre DTC

## Application Conditions

Maximum dim level	10%
-------------------	-----

## Approval and Application

Mech. impact protection code	IK09
Surge Protection (Common/Differential)	Philips standard surge protection level kV

## Controls and Dimming

Dimmable	Yes
----------	-----

## General Information

CE mark	CE mark
Optical cover/lens type	PC-UV
Driver included	Yes
Flammability mark	F
Light source replaceable	Yes
Number of gear units	1 unit
Product Family Code	BDP272
Service tag	Yes

## Light Technical

Standard tilt angle side entry	-
Standard tilt angle posttop	0°
Upward light output ratio	0

## Mechanical and Housing

Color	Dark gray
-------	-----------

## General Information

Order Code	Full Product Name	Luminaire light beam spread	Light source color	Lamp family code	Optic type
49767500	BDP272 LED59-4S/830 II DW50 DR CLO LS-6	12° - 29° × 152°	830 warm white	LED59	Distribution wide 50
49771200	BDP272 LED24-4S/740 II DM33 CLO SRT SRB	4° - 58° × 149°	740 neutral white	LED24	Distribution medium 33

## Initial Performance (IEC Compliant)

Order Code	Full Product Name	Init. Corr. Color Temperature	Init. Color Rendering Index	Initial luminous flux
49767500	BDP272 LED59-4S/830 II DW50 DR CLO LS-6	3000 K	>80	4312 lm

Order Code	Full Product Name	Init. Corr. Color Temperature	Init. Color Rendering Index	Initial luminous flux
49771200	BDP272 LED24-4S/740 II DM33 CLO SRT SRB	4000 K	>70	1840 lm

