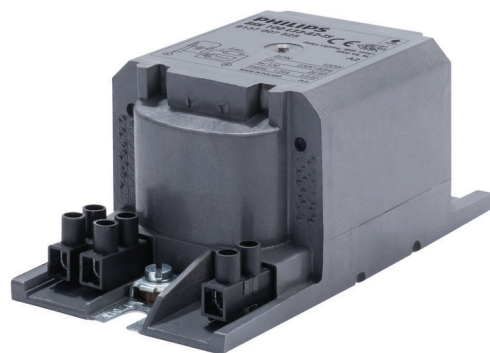


**PHILIPS**

Lighting



# HID-HeavyDuty BSN semi-parallel for SON/CDO/MH/HPI

## BSN 100 L33-A2-TS 230V 50Hz

Encapsulated electromagnetic copper/iron ballasts for use with an external semi-parallel ignitor for CDM, CDO, MH, HPI (Plus) and SON lamps (no ignitor needed for SON-I lamps)

### Product data

General Information	
Application Code	L33-A2-TS
Design	HD1-123
Lamp Type	SON
Number of Lamps	1 piece/unit

Operating and Electrical	
Input Voltage	230 V
Input Frequency	50 Hz
Power Factor 100% Load (Nom)	0.85
Mains Voltage Performance (AC)	-8%~+6%
Mains Voltage Safety (AC)	-10%~+10%
Input Current with PF Correction	0.6 A
Input Current without PF Correction	1.2 A
Power Factor without PF Compensation (Nom)	0.4
Power Losses (Nom)	14.8 W

Wiring	
Wire Striplength	6.0 mm
Ballast Contact Wire Cross Section	2.5 mm <sup>2</sup>
Connector Type	Screw

System characteristics	
Capacitor	14μF/250V
Rated Ballast-Lamp Power	100 W
Recommended Ignitor	for SON lamps ignitor SND 58 (913700185166) or series digital SUD40 (913700193591)

Temperature	
T-Storage (Max)	130 °C
T-Storage (Min)	-30 °C
T-Winding (Max)	130 °C
Delta-T Normal Conditions	65 °C

# HID-HeavyDuty BSN semi-parallel for SON/CDO/MH/HPI

## Approval and Application

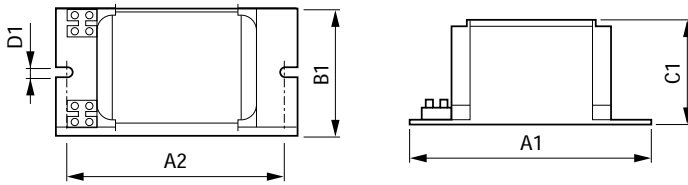
Active Temperature Protection	Yes
Approval Marks	CE marking ENEC certificate

## Product Data

Full product code	871869674094100
Order product name	BSN 100 L33-A2-TS 230V 50Hz
EAN/UPC - Product	8718696740941

Order code	74094100
Numerator - Quantity Per Pack	1
Numerator - Packs per outer box	6
Material Nr. (12NC)	913700752526
Net Weight (Piece)	1.380 kg

## Dimensional drawing



Product	A1	A2	B1	C1	D1
BSN 100 L33-A2-TS 230V 50Hz	123 mm	108 mm	65 mm	53 mm	6.2 mm

BSN 100 L33-A2-TS 230V 50Hz

