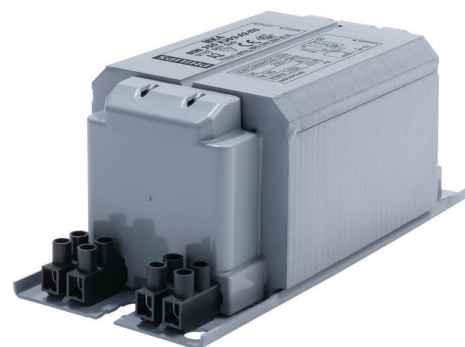


PHILIPS

Lighting



HID-Basic BSN/BMH MK4 semi-parallel for SON/CDO/CDM/MH/ HPI

BSN 250 K302-A2-ITS 230V 50Hz

Impregnated electromagnetic copper ballasts for use with an external semi-parallel ignitor for CDM, CDO, MH, HPI (Plus) and SON lamps

Product data

General Information	
Application Code	K302-A2-ITS
Design	BC2-160
Lamp Type	SON/MH/CDM/CDO
Number of Lamps	1 piece/unit

Operating and Electrical	
Input Voltage	230 V
Input Frequency	50 Hz
Power Factor 100% Load (Nom)	0.85
Mains Voltage Performance (AC)	-8% - +6%
Mains Voltage Safety (AC)	-10% - +10%
Input Current with PF Correction	1.4 A
Input Current without PF Correction	3 A
Power Factor without PF Compensation (Nom)	0.4

Power Losses (Nom)	26.1 W
--------------------	--------

Wiring	
Wire Striplength	6.0 mm
Ballast Contact Wire Cross Section	2.5 mm ²
Connector Type	Screw

System characteristics	
Capacitor	32µF/250V
Rated Ballast-Lamp Power	250 W
Recommended Ignitor	for SON/CDO/CDM lamps ignitor SKD 578 (913700655366)

Temperature	
T-Storage (Max)	130 °C
T-Storage (Min)	-30 °C
T-Winding (Max)	140 °C

HID-Basic BSN/BMH MK4 semi-parallel for SON/CDO/CDM/MH/HPI

Delta-T Normal Conditions	70 °C
---------------------------	-------

Approval and Application

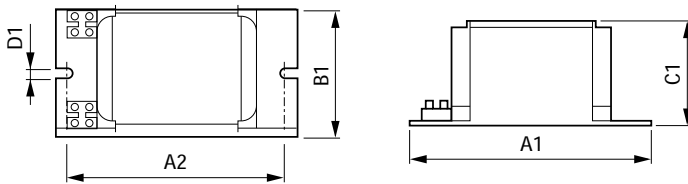
Active Temperature Protection	Yes
Approval Marks	CE marking ENEC certificate

Product Data

Full product code	871869674102300
Order product name	BSN 250 K302-A2-ITS 230V 50Hz

EAN/UPC - Product	8718696741023
Order code	74102300
Numerator - Quantity Per Pack	1
Numerator - Packs per outer box	6
Material Nr. (12NC)	913700752926
Net Weight (Piece)	3.250 kg

Dimensional drawing



Product	A1	A2	B1	C1	D1
BSN 250 K302-A2-ITS 230V 50Hz	160 mm	139 mm	76 mm	65 mm	6.2 mm

BSN 250 K302-A2-ITS 230V 50Hz

