



MASTER LEDtube InstantFit HF

MASTER LEDtube HF 1500mm HO 20W830 T8

The Philips MASTER LEDtube integrates a LED light source into a traditional fluorescent form factor. Its unique design creates a perfectly uniform visual appearance which cannot be distinguished from traditional fluorescent. The MASTER LEDtube Performance is the ideal solution for customers which have higher light requirements and the want to maximize value over lifetime.(need the longest lifetime). Full energy savings and TCO benefits.

Warnings and Safety

- NOTES: The overall energy efficiency and light distribution of any installation that uses these lamps are determined by the design of the installation.

Product data

| General Information | | Colour Rendering Index horiz (Nom) | 83 |
|--------------------------------------|---|---------------------------------------|----------------|
| Cap-Base | G13 ROT (Rotating) [Medium Bi-Pin Fluorescent] | LLMF At End Of Nominal Lifetime (Nom) | 70 % |
| EU RoHS compliant | Yes | Operating and Electrical | |
| Nominal Lifetime (Nom) | 60000 h | Input Frequency | 20000-75000 Hz |
| Switching Cycle | 50000X | Power (Rated) (Nom) | 20 W |
| Light Technical | | Lamp Current (Max) | 750 mA |
| Colour Code | 830 [CCT of 3000K] | Lamp Current (Min) | 300 mA |
| Beam Angle (Nom) | 160 ° | Starting Time (Nom) | 0.5 s |
| Luminous Flux (Nom) | 2900 lm | Warm Up Time to 60% Light (Nom) | 0.5 s |
| Colour Designation | White (WH) | Power Factor (Nom) | 0.9 |
| Colour Temperature, horizontal (Nom) | 3000 K | Voltage (Nom) | 30-80 V |
| Luminous Efficacy (rated) (Nom) | 145.00 lm/W | Temperature | |
| Color Consistency | <6 | T-Ambient (Max) | 45 °C |

MASTER LEDtube InstantFit HF

| | |
|----------------------|--------|
| T-Ambient (Min) | -20 °C |
| T-Storage (Max) | 65 °C |
| T-Storage (Min) | -40 °C |
| T-Case Maximum (Nom) | 55 °C |

Controls and Dimming

| | |
|----------|----|
| Dimmable | No |
|----------|----|

Mechanical and Housing

| | |
|----------------|---------|
| Bulb Material | Plastic |
| Product Length | 1500 mm |

Approval and Application

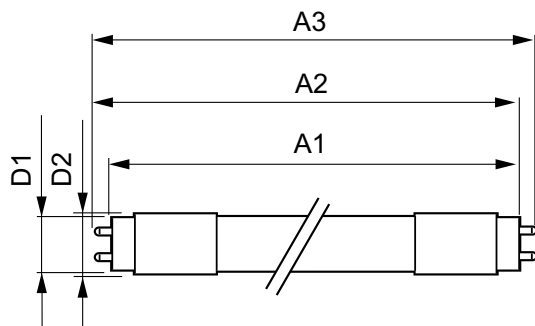
| | |
|-------------------------|--|
| Energy Efficiency Label | A+ |
| Energy Saving Product | Yes |
| Approval Marks | RoHS compliance CE marking KEMA Keur certificate |

| | |
|-------------------------------|--------|
| Approval Marks | TUV |
| Energy Consumption kWh/1000 h | 24 kWh |

Product Data

| | |
|---------------------------------|---------------------------------------|
| Full product code | 871869668758100 |
| Order product name | MASTER LEDtube HF 1500mm HO 20W830 T8 |
| EAN/UPC - Product | 8718696687581 |
| Order code | 68758100 |
| Numerator - Quantity Per Pack | 1 |
| Numerator - Packs per outer box | 10 |
| Material Nr. (12NC) | 929001284602 |
| Net Weight (Piece) | 0.450 kg |

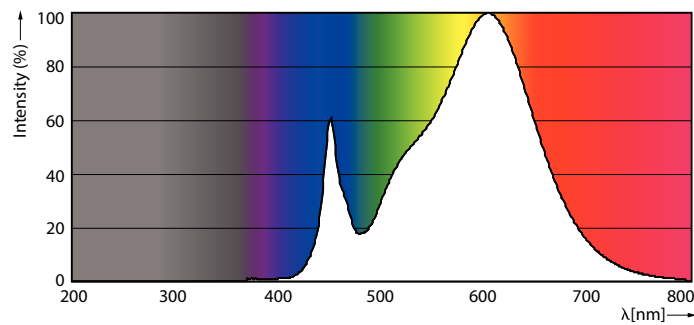
Dimensional drawing



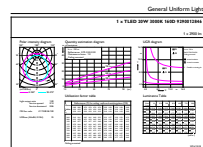
MAS LEDtube HF 1500mm HO 20W830 T8

| Product | D1 | D2 | A1 | A2 | A3 |
|--|---------|-------|-----------|-----------|-----------|
| MASTER LEDtube HF 1500mm HO 20W830 T8 | 25.6 mm | 28 mm | 1498.7 mm | 1505.8 mm | 1512.9 mm |

Photometric data



MAS LEDtube HF 1500mm HO 20W830 T8



MAS LEDtube HF 1500mm HO 20W830 T8

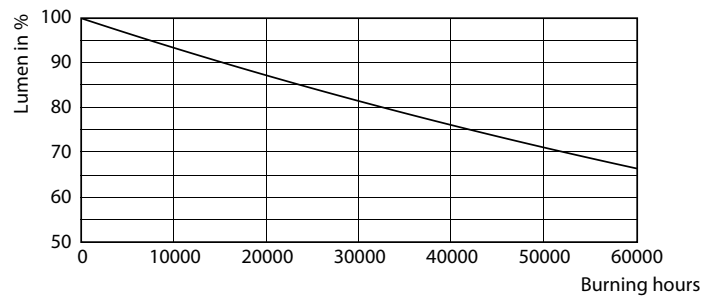
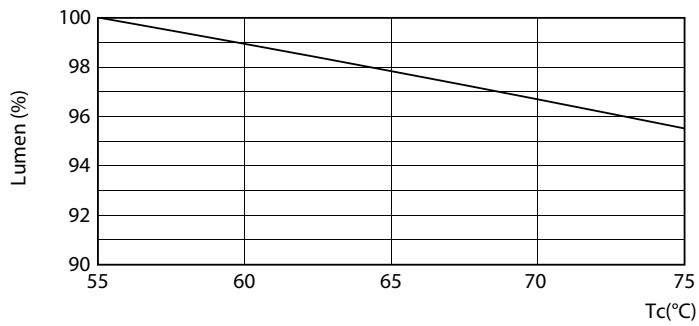
MASTER LEDtube InstantFit HF

Photometric data



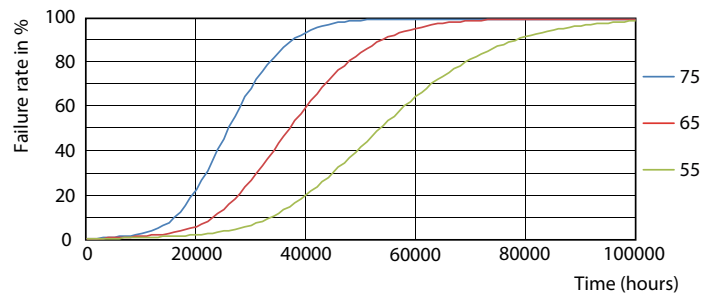
LEDtube HF 1200mm 1500mm UO T8

Lifetime



LEDtube HF 1500mm HO-UO 20-24W G13 830-865 T8

LEDtube HF 1500mm 26W G5 T5



LEDtube HF 1200mm 1500mm UO T8

LEDtube HF HO-UO 14-24W G13 830-865 T8

MASTER LEDtube InstantFit HF

Lifetime



LEDtube HF HO-UO 14-24W G13 830-865 T8

