



MASTER LEDtube Mains T5

MASTER LEDtube 1200mm HO 26W 830 T5

The new Philips Master LEDtube Mains T5 brings simplicity to your lighting project. You don't need to pay attention to the driver technology anymore. Thanks to a unique design, Philips MASTER LEDtube Mains T5 installs in luminaires operating on mains power connection. So simple to operate! Perfectly safe, reliable & easy to install Philips MASTER LEDtube Mains T5 is the ideal alternative to standard fluorescent tubes to maximize value over lifetime with high energy saving and lower maintenance costs.

Product data

| General Information | |
|------------------------|----------|
| Cap-Base | G5 [G5] |
| EU RoHS compliant | Yes |
| Nominal Lifetime (Nom) | 50000 h |
| Switching Cycle | 200000X |

| Light Technical | |
|---------------------------------------|---------------------|
| Colour Code | 830 [CCT of 3000K] |
| Beam Angle (Nom) | 200 ° |
| Luminous Flux (Nom) | 3600 lm |
| Colour Designation | White (WH) |
| Colour Temperature, horizontal (Nom) | 3000 K |
| Luminous Efficacy (rated) (Nom) | 138.00 lm/W |
| Color Consistency | <6 |
| Colour Rendering Index horiz (Nom) | 80 |
| LLMF At End Of Nominal Lifetime (Nom) | 70 % |

| Operating and Electrical | |
|---------------------------------|-------------|
| Input Frequency | 50 to 60 Hz |
| Power (Rated) (Nom) | 26 W |
| Starting Time (Nom) | 0.5 s |
| Warm Up Time to 60% Light (Nom) | 0.5 s |
| Power Factor (Nom) | 0.9 |
| Voltage (Nom) | 220-240 V |

| Temperature | |
|----------------------|---------|
| T-Ambient (Max) | 45 °C |
| T-Ambient (Min) | -20 °C |
| T-Storage (Max) | 65 °C |
| T-Storage (Min) | -40 °C |
| T-Case Maximum (Nom) | 72.1 °C |

| Controls and Dimming | |
|----------------------|----|
| Dimmable | No |

MASTER LEDtube Mains T5

Mechanical and Housing

| | |
|----------------|---------|
| Bulb Material | Glass |
| Product Length | 1200 mm |

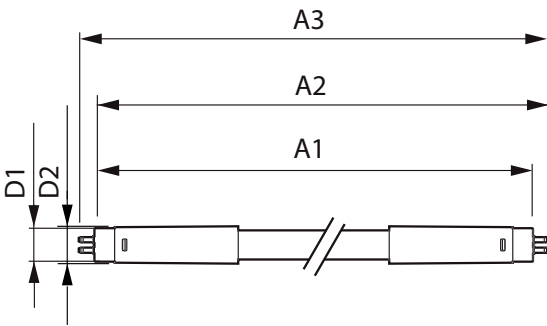
Approval and Application

| | |
|-------------------------------|--|
| Energy Efficiency Label | A++ |
| Energy Saving Product | Yes |
| Approval Marks | CE marking RoHS compliance KEMA Keur certificate |
| Energy Consumption kWh/1000 h | 26 kWh |

Product Data

| | |
|---------------------------------|-------------------------------------|
| Full product code | 871869681921000 |
| Order product name | MASTER LEDtube 1200mm HO 26W 830 T5 |
| EAN/UPC - Product | 8718696819210 |
| Order code | 81921000 |
| Numerator - Quantity Per Pack | 1 |
| Numerator - Packs per outer box | 10 |
| Material Nr. (12NC) | 929001908502 |
| Net Weight (Piece) | 0.215 kg |

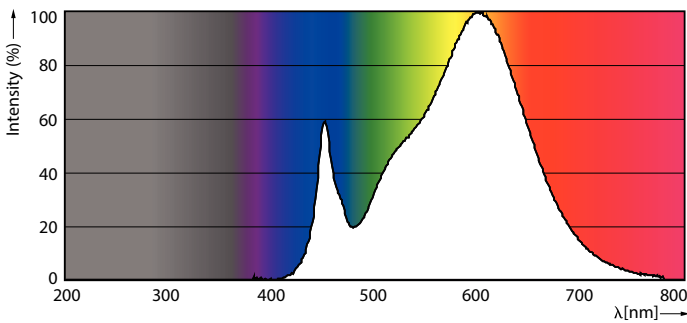
Dimensional drawing



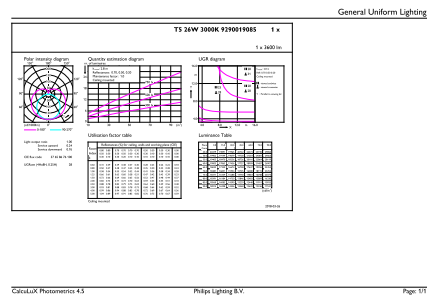
TLED 1200mm 26W-54W 3800lm 200D 3000K G5

| Product | D1 | D2 | A1 | A2 | A3 |
|-------------------------------------|-------|---------|---------|-----------|-----------|
| MASTER LEDtube 1200mm HO 26W 830 T5 | 15 mm | 16.9 mm | 1149 mm | 1156.1 mm | 1163.2 mm |

Photometric data



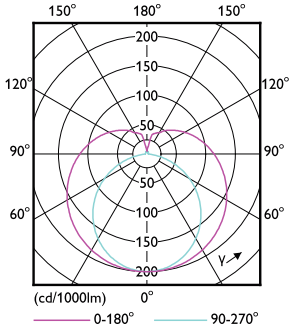
26W G5



26W G5 830 3000K

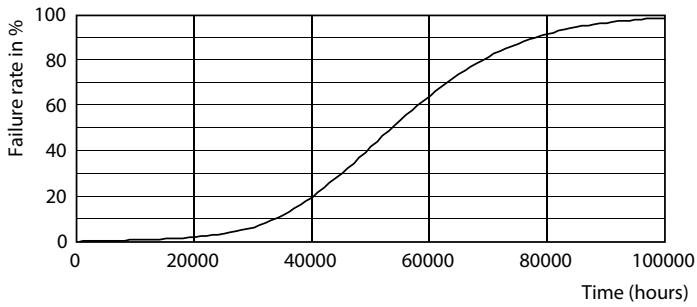
MASTER LEDtube Mains T5

Photometric data

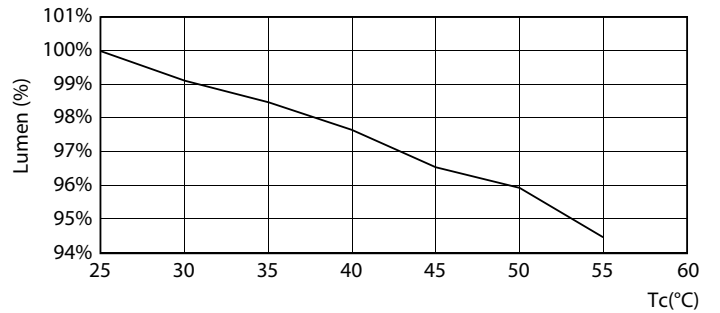


26W G5 830 3000K

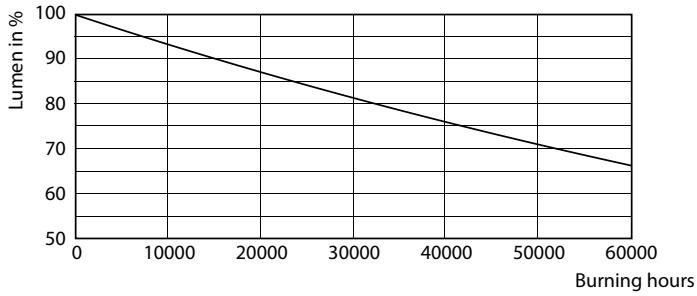
Lifetime



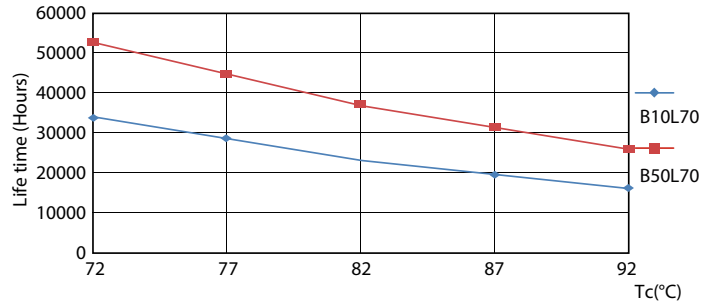
26W G5



26W G5



26W G5



26W G5

MASTER LEDtube Mains T5

Lifetime



26W G5

