



MASTER LEDtube EM/ Mains

MASTER LEDtube 1200mm HO 12.5W 865 T8

The Philips MASTER LEDtube integrates a LED light source into a traditional fluorescent form factor. Its unique design creates a perfectly uniform visual appearance which cannot be distinguished from traditional fluorescent. For those that are looking for value for money within limited budget and re-lamping efforts for better light effect and lifetime.

Warnings and Safety

• -

Product data

General Information	
Cap-Base	G13 ROT (Rotating) [Medium Bi-Pin Fluorescent]
EU RoHS compliant	Yes
Nominal Lifetime (Nom)	60000 h
Switching Cycle	200000X
Light Technical	
Colour Code	865 [CCT of 6500K]
Beam Angle (Nom)	160 °
Luminous Flux (Nom)	2100 lm
Colour Designation	Cool Daylight
Colour Temperature, horizontal (Nom)	6500 K
Luminous Efficacy (rated) (Nom)	168.00 lm/W
Color Consistency	<6
Colour Rendering Index horiz (Nom)	83

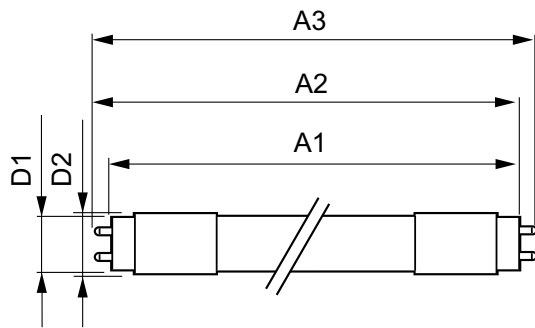
LLMF At End Of Nominal Lifetime (Nom) 70 %	
Operating and Electrical	
Input Frequency	50 to 60 Hz
Power (Rated) (Nom)	12.5 W
Lamp Current (Max)	59 mA
Lamp Current (Min)	54 mA
Starting Time (Nom)	0.5 s
Warm Up Time to 60% Light (Nom)	0.5 s
Power Factor (Nom)	0.9
Voltage (Nom)	220-240 V
Temperature	
T-Ambient (Max)	45 °C
T-Ambient (Min)	-20 °C
T-Storage (Max)	65 °C
T-Storage (Min)	-40 °C

MASTER LEDtube EM/Mains

T-Case Maximum (Nom)	50 °C
Controls and Dimming	
Dimmable	No
Mechanical and Housing	
Bulb Material	Plastic
Product Length	1200 mm
Approval and Application	
Energy Efficiency Label	A++
Energy Saving Product	Yes
Approval Marks	RoHS compliance TUV CE marking KEMA Keur certificate

Energy Consumption kWh/1000 h	13 kWh
Product Data	
Full product code	871869959239400
Order product name	MASTER LEDtube 1200mm HO 12.5W 865 T8
EAN/UPC - Product	8718699592394
Order code	59239400
Numerator - Quantity Per Pack	1
Numerator - Packs per outer box	10
Material Nr. (12NC)	929001922802
Net Weight (Piece)	0.270 kg

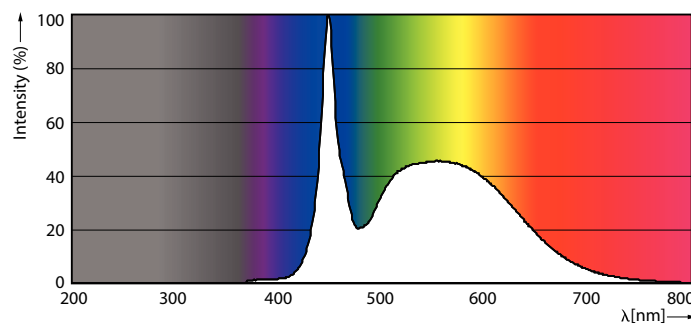
Dimensional drawing



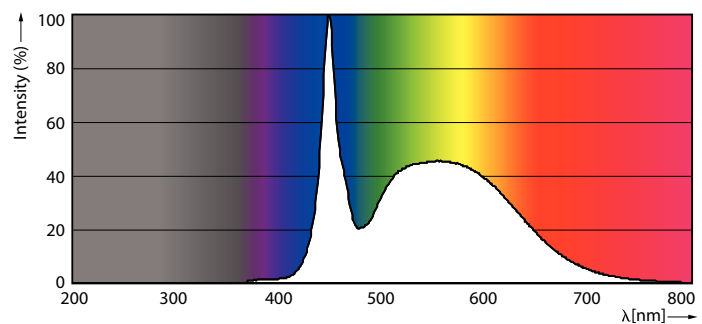
TLED master HE 2100lm 12.35w 4ft 6500k

Product	D1	D2	A1	A2	A3
MASTER LEDtube 1200mm HO 12.5W 865 T8	25.8 mm	28 mm	1198.2 mm	1205.3 mm	1212.4 mm

Photometric data



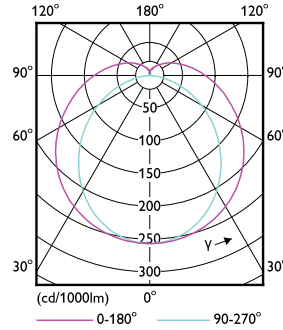
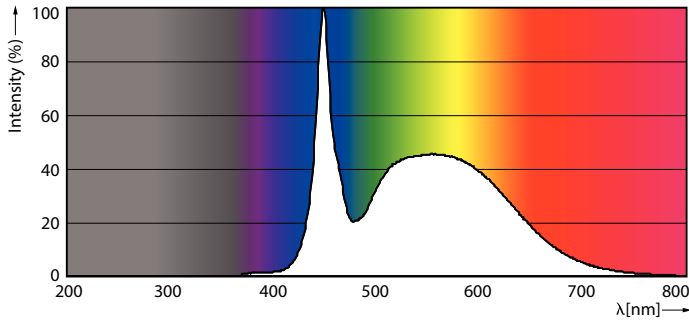
LEDtube T8 MAS HO G13 865



LEDtube MAS HO G13 865

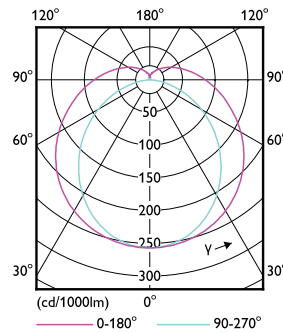
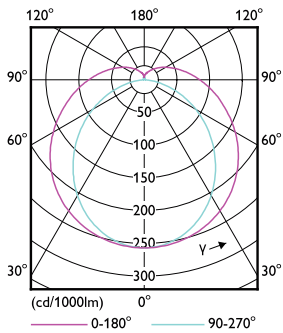
MASTER LEDtube EM/Mains

Photometric data



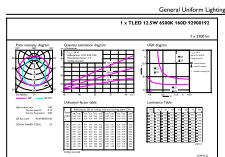
LEDtube MAS HO 12.5W G13 865 16D ND

LEDtube MAS HO G13



LEDtube T8 MAS HO G13

LEDtube MAS HO 12.5W G13 830 16D ND

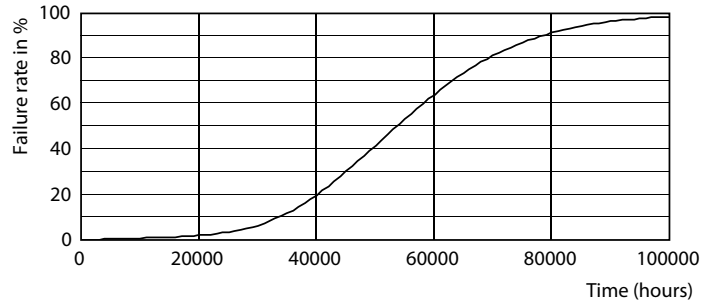
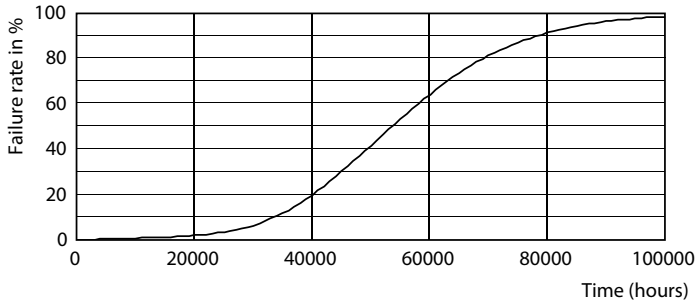


© 2021 Philips Lighting B.V. Page 11/11

LEDtube MAS HO 12.5W G13 865 16D ND

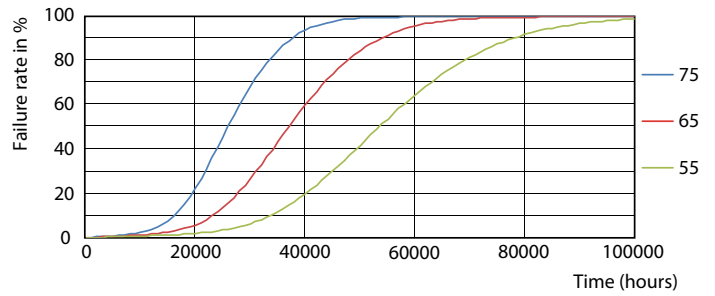
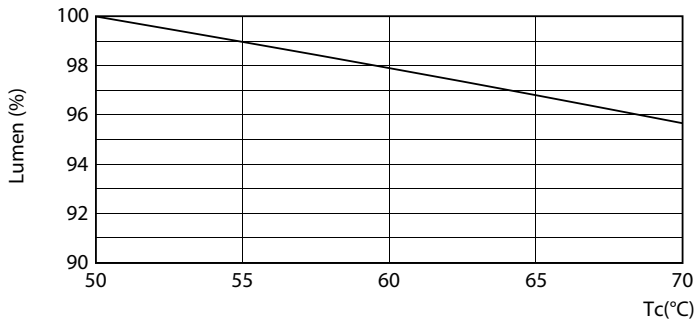
MASTER LEDtube EM/Mains

Lifetime



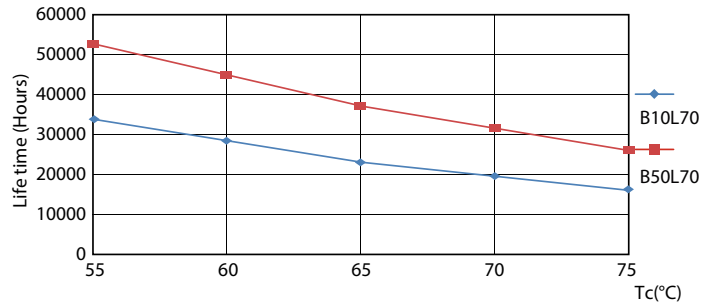
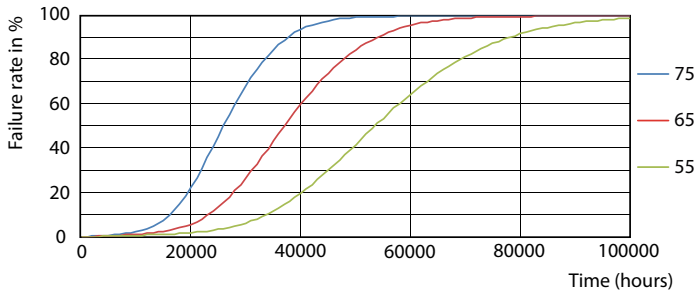
LEDtube MAS HO G13

LEDtube T8 MAS HO G13



LEDtube MAS HO 12.5W G13 830 16D ND

LEDtube MAS HO G13

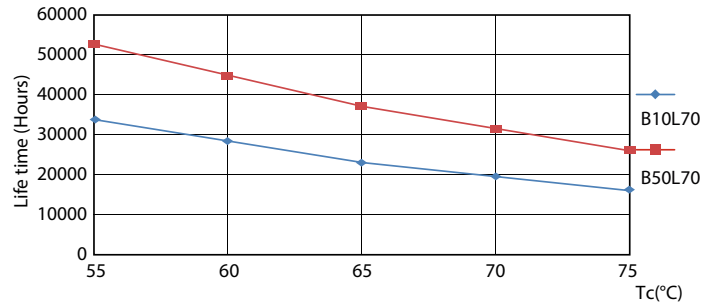
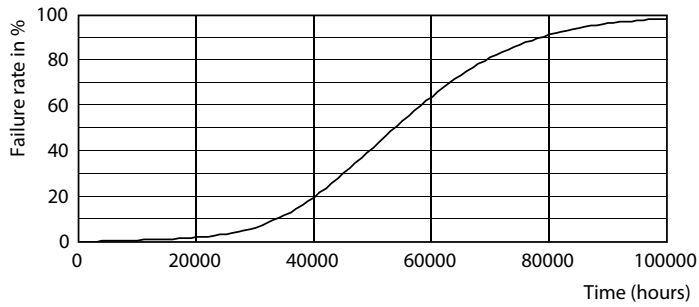


LEDtube MAS HO 12.5W G13 830 16D ND

LEDtube T8 MAS HO G13

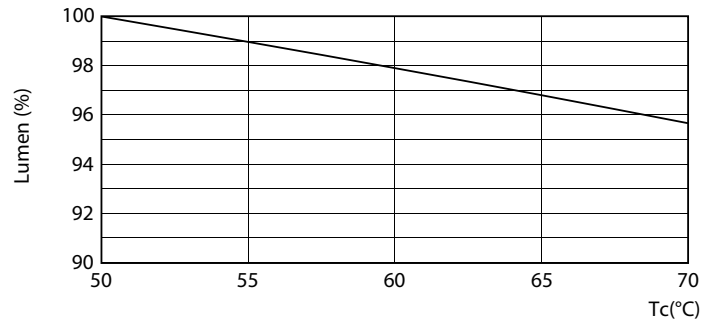
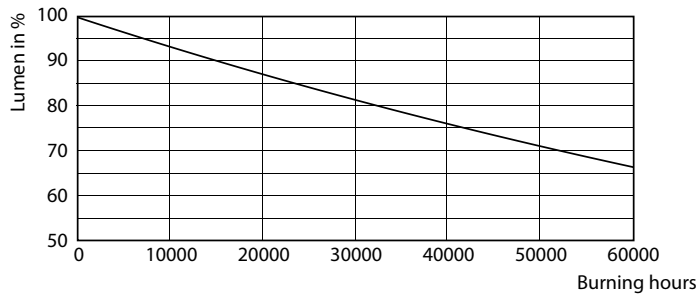
MASTER LEDtube EM/Mains

Lifetime



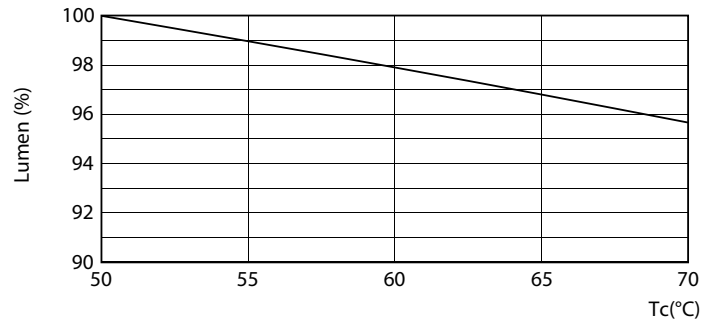
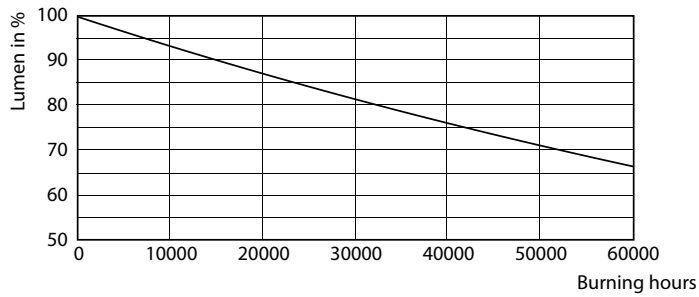
LEDtube MAS HO 12.5W G13 830 16D ND

LEDtube MAS HO 12.5W G13 830 16D ND



LEDtube MAS HO G13

LEDtube MAS HO 12.5W G13

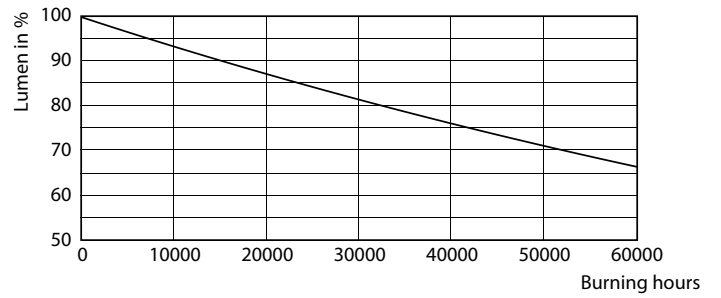
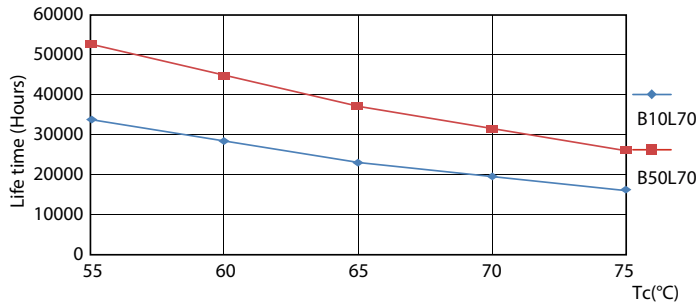


LEDtube T8 MAS HO G13

LEDtube T8 MAS HO 12.5W G13

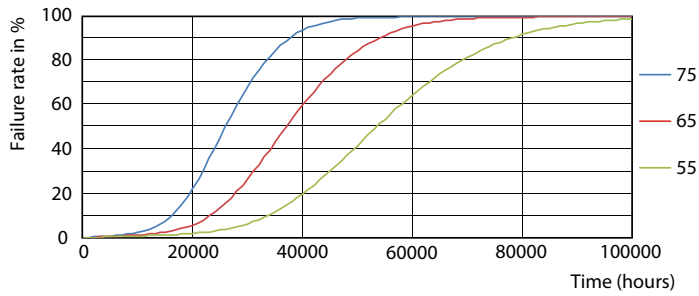
MASTER LEDtube EM/Mains

Lifetime



LEDtube MAS HO G13

LEDtube MAS HO G13



LEDtube T8 MAS HO G13

