



# MASTER LEDtube EM/ Mains

## MASTER LEDtube 1500mm HO 18.2W 840 T8

The Philips MASTER LEDtube integrates a LED light source into a traditional fluorescent form factor. Its unique design creates a perfectly uniform visual appearance which cannot be distinguished from traditional fluorescent. For those that are looking for value for money within limited budget and re-lamping efforts for better light effect and lifetime.

### Warnings and Safety

• -

### Product data

General Information	
Cap-Base	G13 ROT (Rotating) [ Medium Bi-Pin Fluorescent]
EU RoHS compliant	Yes
Nominal Lifetime (Nom)	60000 h
Switching Cycle	200000X
Light Technical	
Colour Code	840 [ CCT of 4000K]
Beam Angle (Nom)	160 °
Luminous Flux (Nom)	3100 lm
Colour Designation	Cool White (CW)
Colour Temperature, horizontal (Nom)	4000 K
Luminous Efficacy (rated) (Nom)	170.00 lm/W
Color Consistency	<6
Colour Rendering Index horiz (Nom)	83

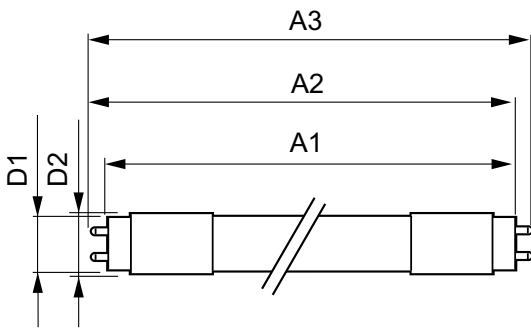
LLMF At End Of Nominal Lifetime (Nom) 70 %	
Operating and Electrical	
Input Frequency	50 to 60 Hz
Power (Rated) (Nom)	18.2 W
Lamp Current (Max)	87 mA
Lamp Current (Min)	79 mA
Starting Time (Nom)	0.5 s
Warm Up Time to 60% Light (Nom)	0.5 s
Power Factor (Nom)	0.9
Voltage (Nom)	220-240 V
Temperature	
T-Ambient (Max)	45 °C
T-Ambient (Min)	-20 °C
T-Storage (Max)	65 °C
T-Storage (Min)	-40 °C

# MASTER LEDtube EM/Mains

T-Case Maximum (Nom)	55 °C
<b>Controls and Dimming</b>	
Dimmable	No
<b>Mechanical and Housing</b>	
Bulb Material	Plastic
Product Length	1500 mm
<b>Approval and Application</b>	
Energy Efficiency Label	A++
Energy Saving Product	Yes
Approval Marks	RoHS compliance TUV CE marking KEMA Keur certificate

Energy Consumption kWh/1000 h	19 kWh
<b>Product Data</b>	
Full product code	871869959243100
Order product name	MASTER LEDtube 1500mm HO 18.2W 840 T8
EAN/UPC - Product	8718699592431
Order code	59243100
Numerator - Quantity Per Pack	1
Numerator - Packs per outer box	10
Material Nr. (12NC)	929001923002
Net Weight (Piece)	0.450 kg

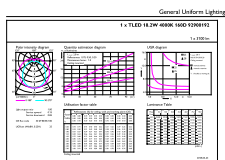
## Dimensional drawing



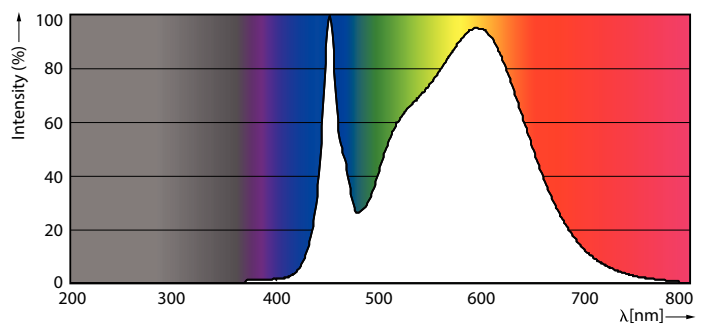
TLED master HE 3100lm 18.2w 5ft 4000k

Product	D1	D2	A1	A2	A3
MASTER LEDtube 1500mm HO 18.2W 840 T8	25.8 mm	28 mm	1498.8 mm	1505.9 mm	1513 mm

## Photometric data



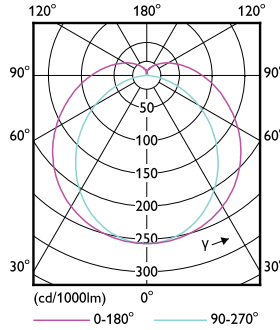
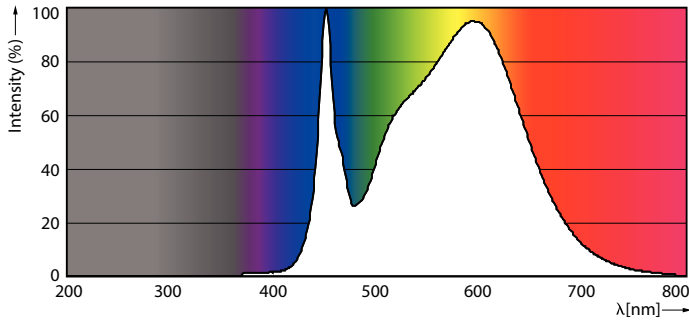
LEDtube MAS HO 18.2W G13 840 16D ND



LEDtube MAS HO G13

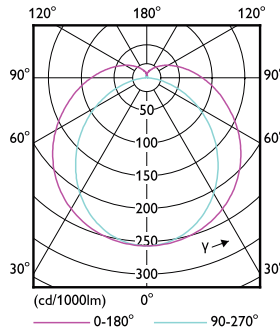
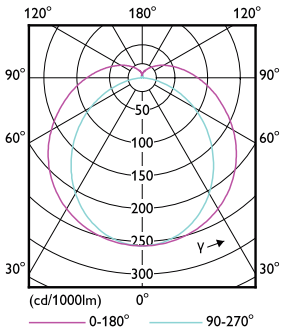
# MASTER LEDtube EM/Mains

## Photometric data



LEDtube MAS HO 12.5W G13 840 16D ND

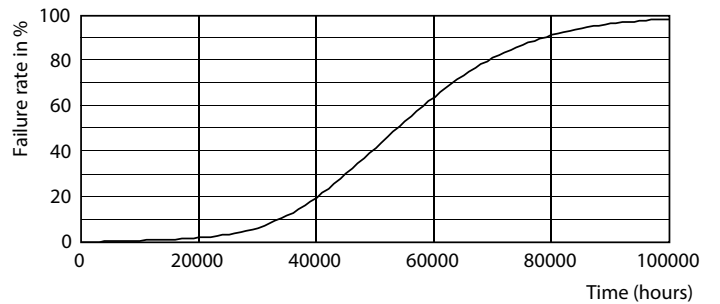
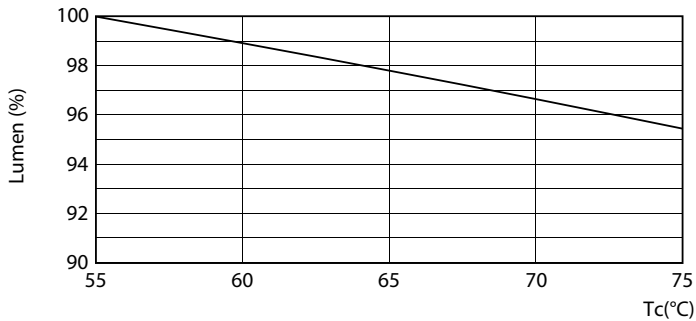
LEDtube MAS HO G13



LEDtube T8 MAS HO G13

LEDtube MAS HO 12.5W G13 830 16D ND

## Lifetime

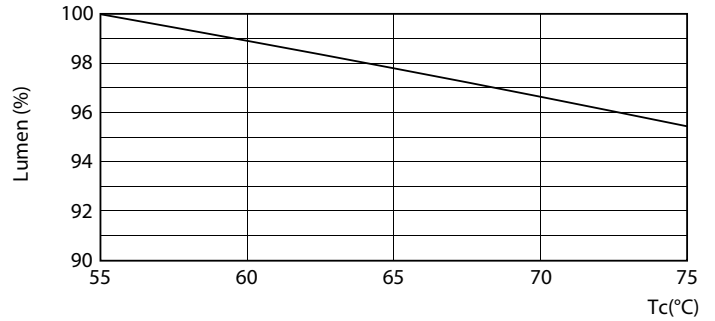
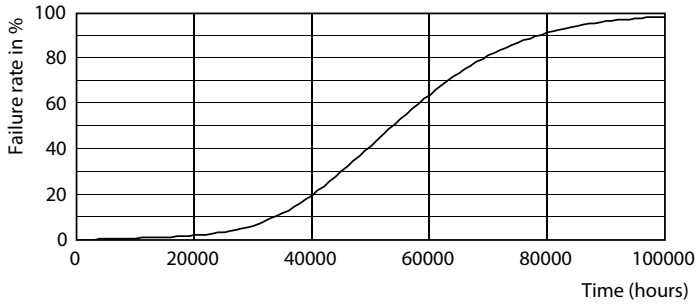


LEDtube T8 MAS HO 18.2W G13

LEDtube MAS HO G13

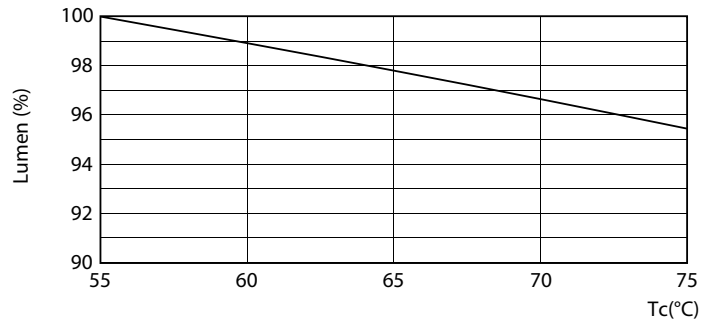
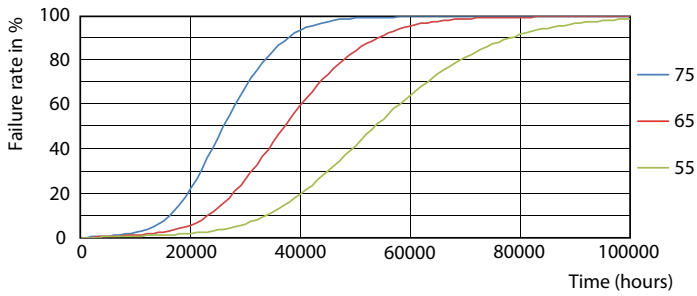
# MASTER LEDtube EM/Mains

## Lifetime



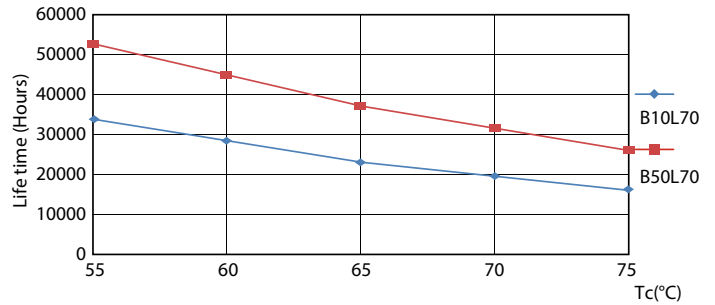
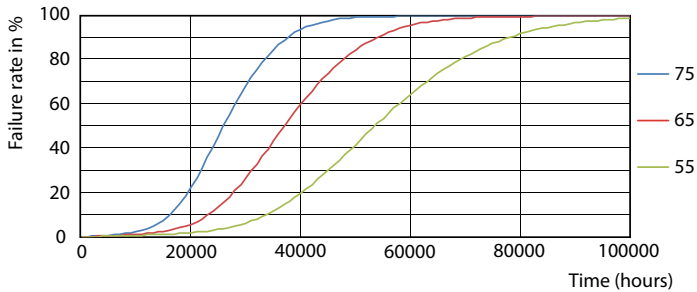
LEDtube T8 MAS HO G13

LEDtube MAS HO 18.2W G13 830 16D ND



LEDtube MAS HO G13

LEDtube MAS HO 18.2W G13

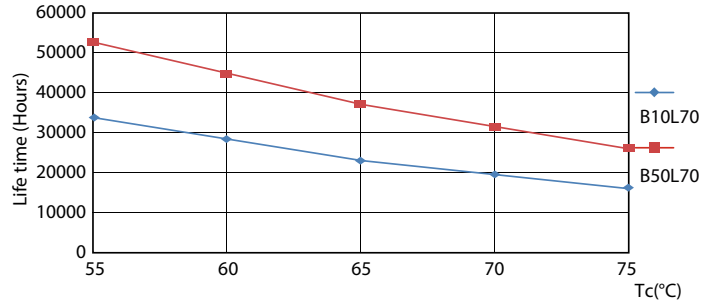
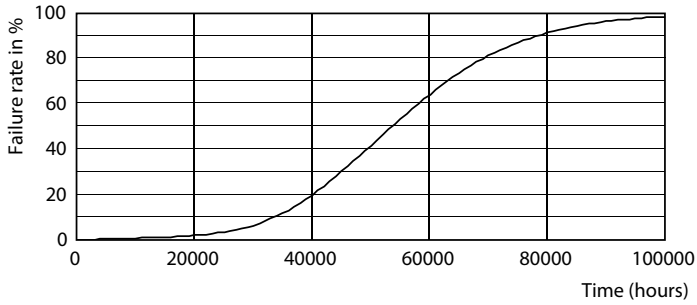


LEDtube MAS HO 12.5W G13 830 16D ND

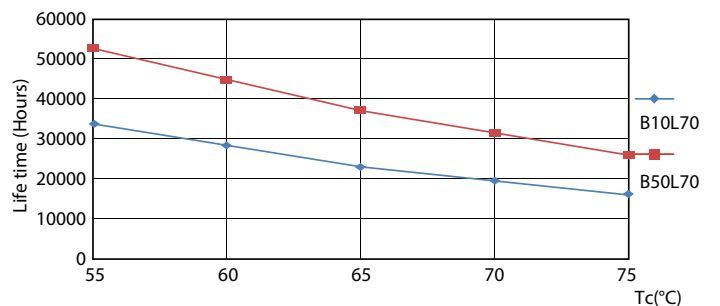
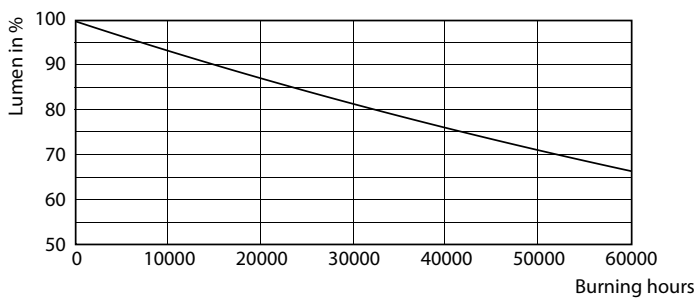
LEDtube T8 MAS HO G13

# MASTER LEDtube EM/Mains

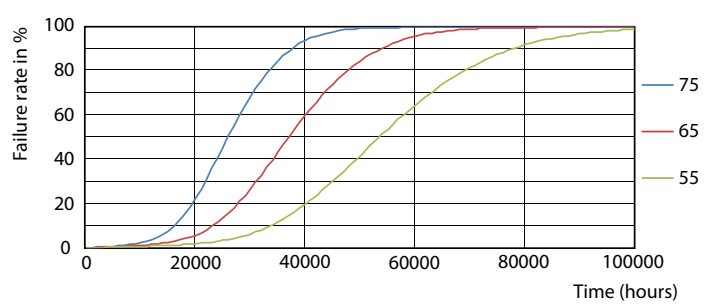
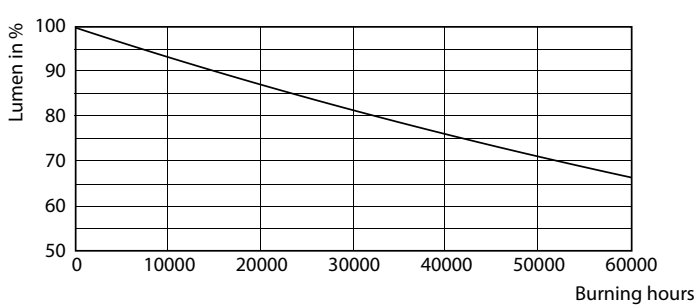
## Lifetime



LEDtube MAS HO 12.5W G13 830 16D ND



LEDtube MAS HO G13



LEDtube T8 MAS HO G13

## MASTER LEDtube EM/Mains

