

LEDtube Mains T5

MAS LEDtube 600mm HE 8W 840 T5

The new Philips Master LEDtube Mains T5 brings simplicity to your lighting project. You don't need to pay attention to the driver technology anymore. Thanks to a unique design, Philips MASTER LEDtube Mains T5 directly installs in luminaires operating on mains power connection. So simple to operate and no need to carry double stock of products! Perfectly safe, reliable & easy to install Philips MASTER LEDtube Mains T5 is the ideal alternative to standard fluorescent tubes to maximize value overlifetime with high energy saving and lower maintenance costs.

Product data

General Information		Power (Rated) (Nom)	
Cap-Base	G5 [G5]	Power (Rated) (Nom)	8 W
EU RoHS compliant	Yes	Lamp Current (Max)	90 mA
Nominal Lifetime (Nom)	50000 h	Lamp Current (Min)	35 mA
Switching Cycle	200000X	Starting Time (Nom)	0.5 s
Technical Type	8-14W	Warm Up Time to 60% Light (Nom)	0.5 s
		Power Factor (Nom)	0.9
		Voltage (Nom)	100-240 V
Light Technical		Temperature	
Colour Code	840 [CCT of 4000K]	T-Ambient (Max)	45 °C
Beam Angle (Nom)	200 °	T-Ambient (Min)	-20 °C
Luminous Flux (Nom)	1050 lm	T-Storage (Max)	65 °C
Colour Designation	Cool White (CW)	T-Storage (Min)	-40 °C
Colour Temperature, horizontal (Nom)	4000 K	T-Case Maximum (Nom)	60 °C
Luminous Efficacy (rated) (Nom)	131.00 lm/W		
Color Consistency	<6	Controls and Dimming	
Colour Rendering Index horiz (Nom)	80	Dimmable	No
LLMF At End Of Nominal Lifetime (Nom)	70 %		
Operating and Electrical		Mechanical and Housing	
Input Frequency	50 to 60 Hz	Bulb Finish	Frosted

LEDtube Mains T5

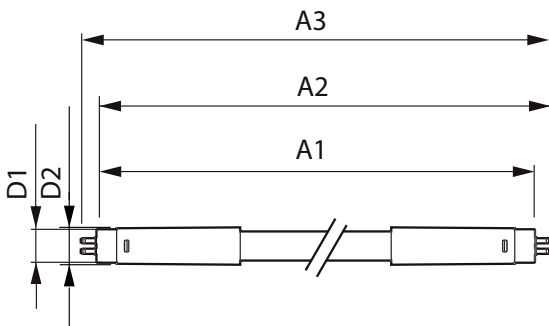
Bulb Material	Glass
Product Length	600 mm
Approval and Application	
Energy Efficiency Label	A++
Energy Saving Product	Yes
Approval Marks	RoHS compliance CE marking KEMA Keur certificate
Energy Consumption kWh/1000 h	8 kWh

Product Data

Full product code	871869978345700
-------------------	-----------------

Order product name	MAS LEDtube 600mm HE 8W 840 T5
EAN/UPC - Product	8718699783457
Order code	78345700
Numerator - Quantity Per Pack	1
Numerator - Packs per outer box	10
Material Nr. (12NC)	929002420708
Net Weight (Piece)	0.250 kg

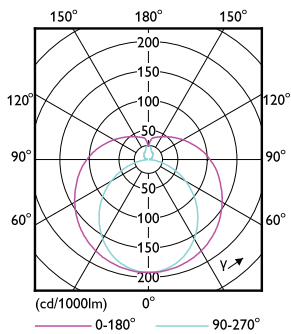
Dimensional drawing



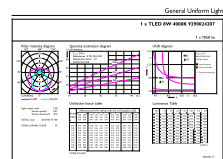
Master LEDtube 600mm 8W840 G5 WV GMGC

Product	D1	D2	A1	A2	A3
MAS LEDtube 600mm HE 8W 840 T5	15.8 mm	19 mm	549 mm	556.1 mm	563.2 mm

Photometric data



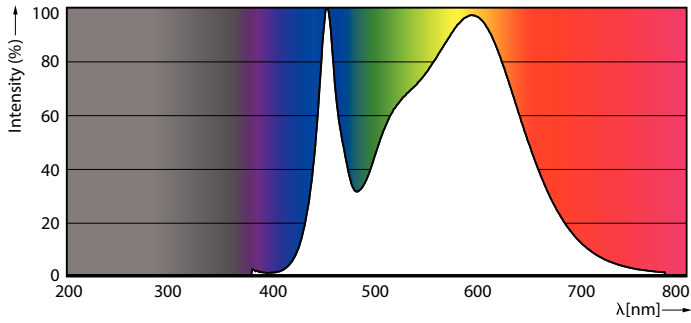
LEDtube MAS 8W G5 1000lm



LEDtube MAS 8W G5 1050lm 840

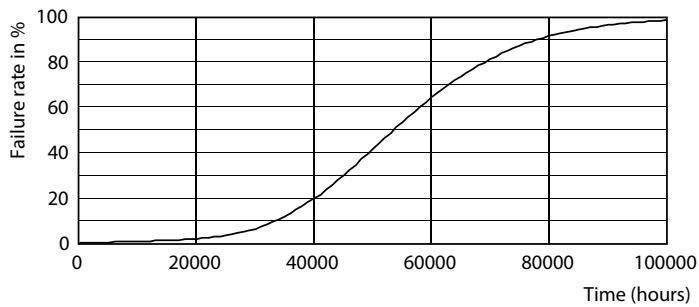
LEDtube Mains T5

Photometric data

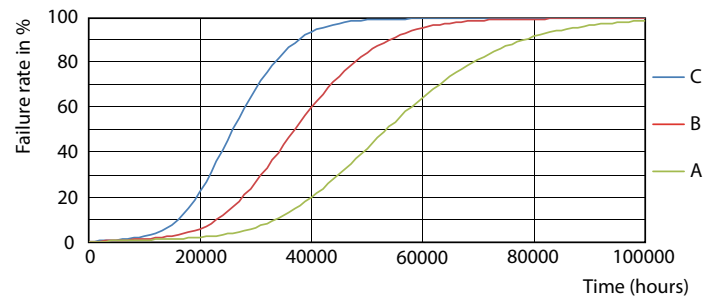


LEDtube MAS 8W G5 1050lm 840

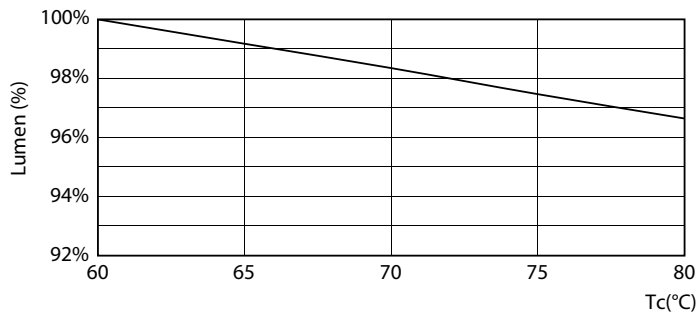
Lifetime



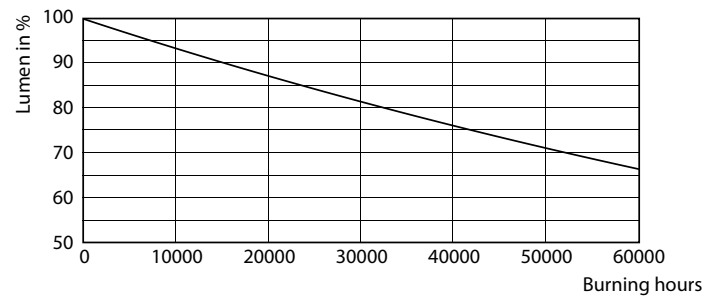
LEDtube 50K-LED



LEDtube 50K FailureRate-LED



LEDtube 8W 50K LumenVsTc



LEDtube 50K-LMP

LEDtube Mains T5

Lifetime



LEDtube 50K LifetimeVsTc-LED

